

PRELIMINARY



261 kW



180 t



MAX CAB

5500E

Crawler crane

TIER IVf emission standards

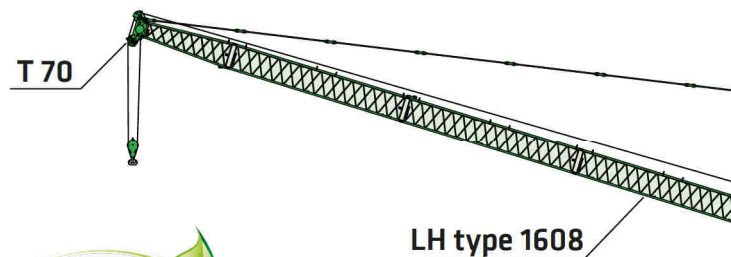
5500E Advanced. The E-Series.



1972: Rope-driven SK 15 with plastic operator cab

What makes up the E-Series

- 60 years of experience in the design and construction of duty cycle cranes
- Uncompromisingly high performance in all areas
- Technology that can be mastered: High-quality components without over-engineering
- Long product service life and high value retention



Your top benefits:

1 Green Efficiency
Save fuel – reduce operating costs
Work quietly – protect operator and environment



2 Peak performance
Durable mechanical systems – stressed parts optimized
High speeds – high load capacities

3 Maximum operating comfort
Comfortable Maxcab operator cab – relaxed work
SENCON – SENNEBOGEN Control System

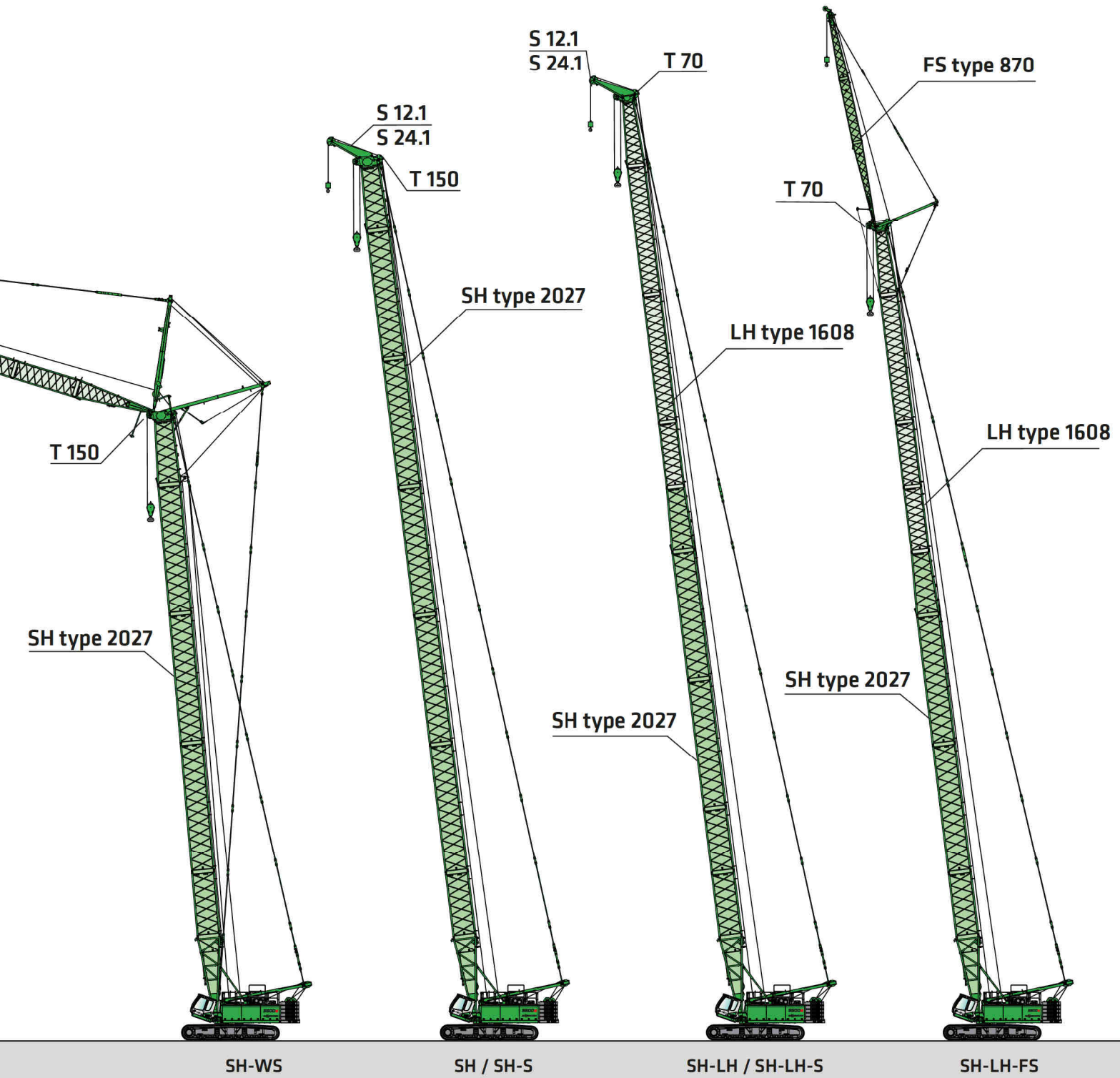


4 Flexibility in use
Driving under load – low space requirement
Strong undercarriage traction – good all-terrain mobility

5 Easy transport
Star-Lifter undercarriage – quickly ready for use
Ballast support system – short set-up time

6 Maintenance and service made easy
Easy fault diagnosis – central measuring points
Easy maintenance – clear labeling

7 Consultation and support
3 production sites – 2 subsidiaries
120 sales partners – over 300 service stations



5500E Technical data, equipment

MACHINE TYPE

Model (type) **5500**

ENGINE

Model	Cat C9; Tier IIIa 261 kW / 355 hp at 1850 rpm Cat C9.3; TIER IVf 261 kW / 355 hp at 1850 rpm Direct injection, turbo-charged, charge air cooler, reduced emissions
Cooling	Water-cooled
Diesel filter	With water separator
Air filter	Dry filter with pre-separator, automatic dust discharge, main element and safety element, contamination indicator
Fuel tank	max. 850 l / 785 l (center of the sight glass)
DEF tank	33 l
Electr. system	24 V
Electric installation	Easy and very clear
Batteries	2 x 150 Ah , main switch
Options	<ul style="list-style-type: none"> ■ Low-temperature package with engine pre-heating and heated diesel filter ■ Electric fuel pump

UPPERCARRIAGE

Design	Torsion-resistant box design, precision crafted, bronze bushings for boom bearing arrangement, clear and very service-friendly concept, engine installed in the longitudinal direction
Electrical system	Central electrical distributor, battery disconnect switch
Lighting	LED headlights for optimal illumination of the work area
Safety	<ul style="list-style-type: none"> ■ Camera monitoring of the rear area and on the right side
Options	<ul style="list-style-type: none"> ■ Maritime climate varnish as corrosion protection ■ Low temperature package ■ Ballast support fixture ■ Pinion tooth lubrication for slewing ring, outer ■ Automatic central lubrication system for equipment and slewing ring ■ Further cameras on customer request ■ Upper-carriage railing right + left

HYDRAULIC SYSTEM

Multi-circuit hydraulic system for optimal function and capacity, all movements can be run simultaneously.	
Pump type	The hydraulic pumps are variable displacement piston pumps with individual control and energy-saving flow-on-demand control.
Pump control	The pumps only supply as much oil as is actually consumed. Pressure cut-off, load limit sensing control
Operating pressure	max. 330 bar
Filtration	High-performance filtration with long-term change interval, contamination indicator, SENNEBOGEN HydroClean micro-filter system with water separator, option
Hydraulic tank	max: 750 l / 575 l (center of the sight glass)
Control system	Proportional, precision hydraulic servo control of the movements, 2 servo joysticks for work functions, supplemental functions via switches and foot pedals – arranged clearly and ergonomically. High energy efficiency due to large-dimensioned hydraulic valves and lines. Measurement connections in the hydraulic circuits
Safety	Hydraulic circuits secured with safety valves
Options	<ul style="list-style-type: none"> ■ Bio-oil – environmentally friendly ■ SENNEBOGEN HydroClean micro-filter system with water separator

SLEWING DRIVE

Gearbox	Compact planetary gear with slant-axis hydraulic motor, integrated brake valves
Slewing gear brake	Spring-loaded multi-disk brake
Slewing ring	Roller bearing rotary connection with exterior gearing
Slewing speed	0-2.5 rpm , 3 adjustable slewing speeds
Options	<ul style="list-style-type: none"> ■ Positioning slewing gear brake

5500E Technical data, equipment

CAB MAX CAB

Cab type	Maxcab
Cab equipment	SENNEBOGEN Maxcab - cab with sliding door, vibration-damped, spacious operator area, with excellent sound insulation, large cab with outstanding all-around view and new ergonomically designed control panels, can be moved out approx. 0.8 m and hydraulically tilted back approx. 20 degrees, toned safety glass, adjustable windshield, large sunroof, windshield wiper / washer for windshield and sunroof. Sunblind for roof window. Automatic heating and climate control with central control panel, fresh air and circulating air stage with particle filter, defroster circuit, adjustable ventilation nozzles for optimum indoor climate. Comfort seat ergonomically designed, multiply adjustable, lumbar support, headrest, adjustable arm rests and seat belt. Sunroof made of VSG safety glass (8.76 mm)

- Options
- Cab type E270, can be hydraulically elevated 270 cm, can be inclined 20°
 - Platform with railing next to cab
 - Auxiliary heating system with timer
 - Activated-carbon filter for cab
 - Sliding window in operator door
 - Armored-glass sunroof, rigidly glazed
 - Cab windshield in armored-glass design, rigidly glazed
 - Sunblind for windshield
 - Protective roof grating
 - FOPS protective roof grating for roof
 - Radio kit with antenna and speakers
 - Radio with CD player
 - SENtrack

ATTACHMENTS

Design	Decades of experience and the latest computer simulations guarantee the greatest degree of stability and life-span
Boom adjustment winch	Slant axis hydraulic motor drive with compact planetary gear and 2 x 67 kN tensile force; rope diameter 22 mm.
Safety brake	Spring-loaded disk brake
Crane safety	Latest generation of load moment monitoring, display shows all important data, lifting limit switch, pressure relief valves, cable exit protection
Boom	SH boom length up to 74.7 m

- Options
- Max. boom length with SHLH equipment: 80.3 m
 - Max. boom length with SHWS equipment: 52.3 m + 52.3 m
 - Auxiliary jib, for load ratings to 12 t
 - Auxiliary jib, for load ratings to 24 t
 - Fly jib up to 29.9 m

UNDERCARRIAGE

Design	Very strong Star-Lifter wide-gauge crawler undercarriage, with integrated, protected drive transmission
Travel drive	Strong travel drive with axial piston hydraulic motor and directly attached automatically functioning brake valve and compact planetary gear on each running gear side
Parking brake	Spring-loaded multi-disk brake
Traveling gear	Maintenance-free tractor traveling gear with hydraulic chain tension, 1000 mm flat base plates
Travel speed	0 - 1.4 km/h
Options	<ul style="list-style-type: none"> ■ 1200 mm flat base plates ■ Star-Lifter telescopic undercarriage

WINCH

The winches are driven via high-pressure-regulated adjustable hydraulic motors, thus there is always optimal pulling force speed control. Hydraulic lowering brake valves for sensitive, wear-free braking. Strong oil-bath planetary gear, low-maintenance. Holding brakes are spring-loaded, maintenance-free, low-wear disc brakes running in the oil bath, oil-cooled.

Main winches

Rope winch (rated load) 1st layer	160 kN
Rope diameter	26 mm
Rope speed 1st layer	0 - 105 m/min

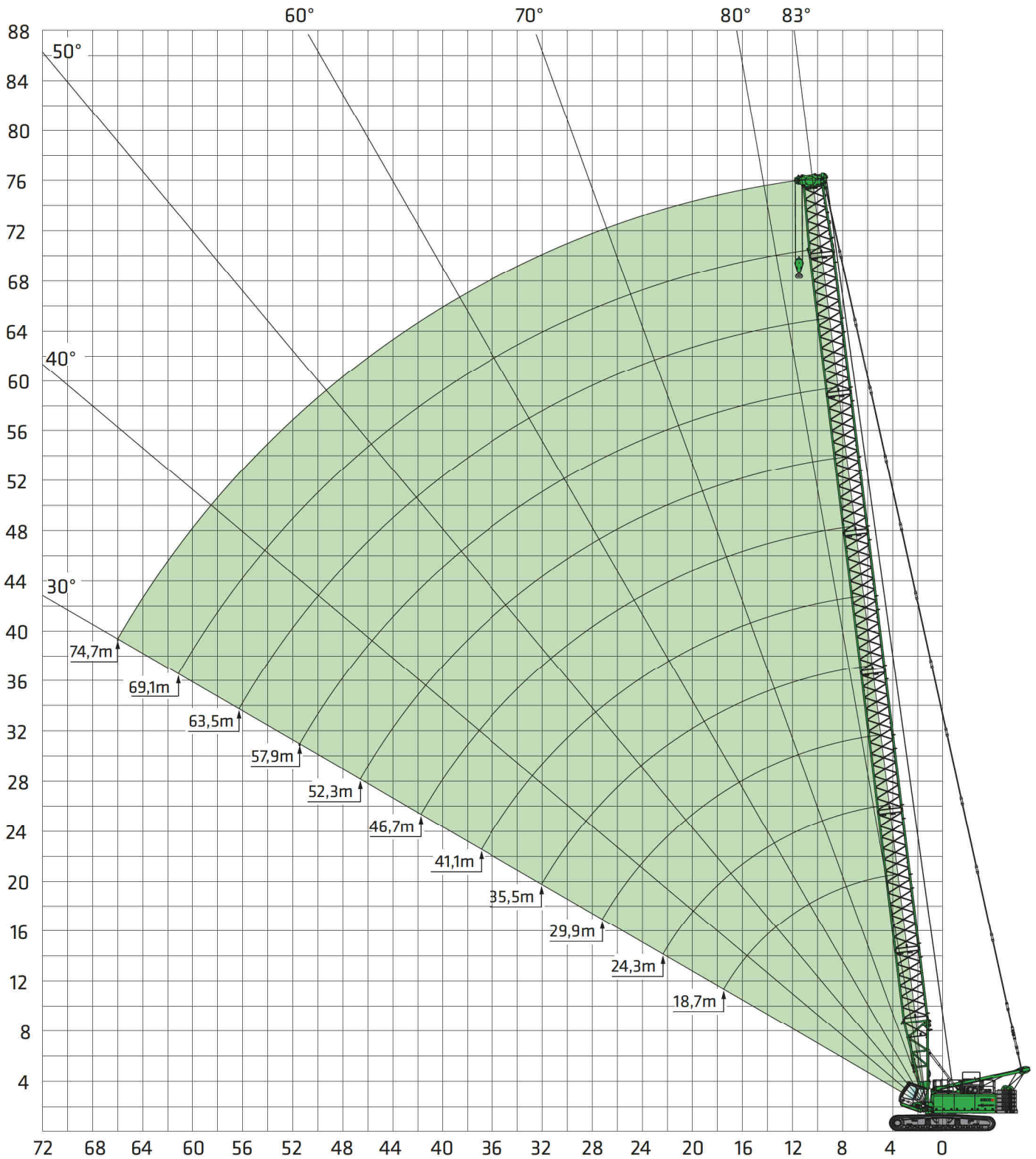
OPERATING WEIGHT

Mass	approx. 166,000 kg 5500 Star-Lifter with 2 hoisting winches, basic boom 18.7 m, counterweight 60 + 26 t undercarriage counterweight, 1000 mm flat base plates, hoisting rope, and 80 t bottom hook block
Notice	The operating weight varies depending on the version and equipment.

5500E Crane equipment



Main boom SH



Boom assembly see page 23

6 Subject to change. See page 7 for notes on load lift charts.

5500E Load ratings



Main boom SH

60 t 26 t	Boom length [m]											
	13.1	18.7	24.3	29.9	35.5	41.1	46.7	52.3	57.9	63.5	69.1	74.7
4.0	180.0**	106/4.7*										
5.0	160.0**	146,3	135.0 / 5.4									
6.0	138.0**	132.9	127.8	116.0 / 6.1	96.0 / 6.8							
7.0	119.5**	119.5	115.7	107.2	94.4	79.8 / 7.5						
8.0	104.3**	106.1	103.6	97.6	87.7	77.2	66.2 / 8.1	55.2 / 8.8				
9.0	92.3**	92.7	91.5	88.0	80.9	72.4	63.3	54.8	46.0 / 9.5			
10.0	78.9**	79.3	79.4	78.4	74.1	67.6	60.0	52.4	45.2	38.4 / 10.2	31.7 / 10.9	
11.0	68.7**	69.0	69.0	68.9	67.4	62.9	56.7	50.1	43.5	37.4	31.6	26.5 / 11.6
12.0	60.5**	60.9	60.9	60.8	60.6	58.1	53.4	47.7	41.8	36.2	30.7	26.2
13.0	53.9**	54.4	54.4	54.3	54.1	53.3	50.1	45.4	40.1	35.0	29.8	25.6
14.0		49.2	49.1	49.0	48.8	48.6	46.7	43.0	38.5	33.8	29.0	24.9
15.0		44.7	44.7	44.5	44.4	44.1	43.4	40.7	36.8	32.6	28.1	24.2
16.0		41.0	41.0	40.8	40.6	40.3	40.1	38.3	35.1	31.4	27.2	23.6
17.0		37.8	37.8	37.6	37.4	37.1	36.8	36.0	33.5	30.2	26.4	22.9
18.0		35.0	35.0	34.8	34.6	34.3	34.0	33.6	31.8	28.9	25.5	22.3
19.0			32.6	32.3	32.1	31.8	31.6	31.3	30.1	27.7	24.6	21.6
20.0			30.4	30.2	30.0	29.7	29.4	29.1	28.4	26.5	23.8	21.0
22.0			26.7	26.5	26.3	26.0	25.7	25.4	25.1	24.1	22.0	19.7
24.0			25.3 / 22.9	23.6	23.4	23.1	22.8	22.4	22.1	21.7	20.3	18.4
26.0				21.1	20.9	20.6	20.3	20.0	19.6	19.3	18.5	17.1
28.0				19.3 / 27.7	18.9	18.6	18.3	17.9	17.6	17.2	16.8	15.7
30.0					17.1	16.8	16.5	16.1	15.8	15.4	15.1	14.4
32.0					15.6	15.3	15.0	14.6	14.3	13.9	13.6	13.1
34.0					15.1 / 32.6	13.9	13.6	13.3	12.9	12.6	12.2	11.8
36.0						12.8	12.5	12.1	11.8	11.4	11.0	10.7
38.0						12.0 / 37.5	11.4	11.1	10.7	10.4	10.0	9.6
40.0							10.5	10.1	9.8	9.4	9.1	8.7
42.0							9.7	9.3	9.0	8.6	8.2	7.8
44.0							9.5 / 42.3	8.6	8.2	7.8	7.5	7.1
46.0								7.9	7.5	7.2	6.8	6.4
48.0								7.5 / 47.2	6.9	6.5	6.2	5.8
50.0									6.3	6.0	5.6	5.2
52.0									5.8	5.4	5.1	4.7
54.0										4.9	4.6	4.2
56.0										4.5	4.1	3.7
58.0										4.3 / 56.9	3.7	3.3
60.0											3.3	2.9
62.0											3.0 / 61.7	2.5
64.0												2.2
66.0												1.9
68.0												1.8 / 66.6
Number of strands	15	13	12	10	8	7	6	5	4	4	3	3

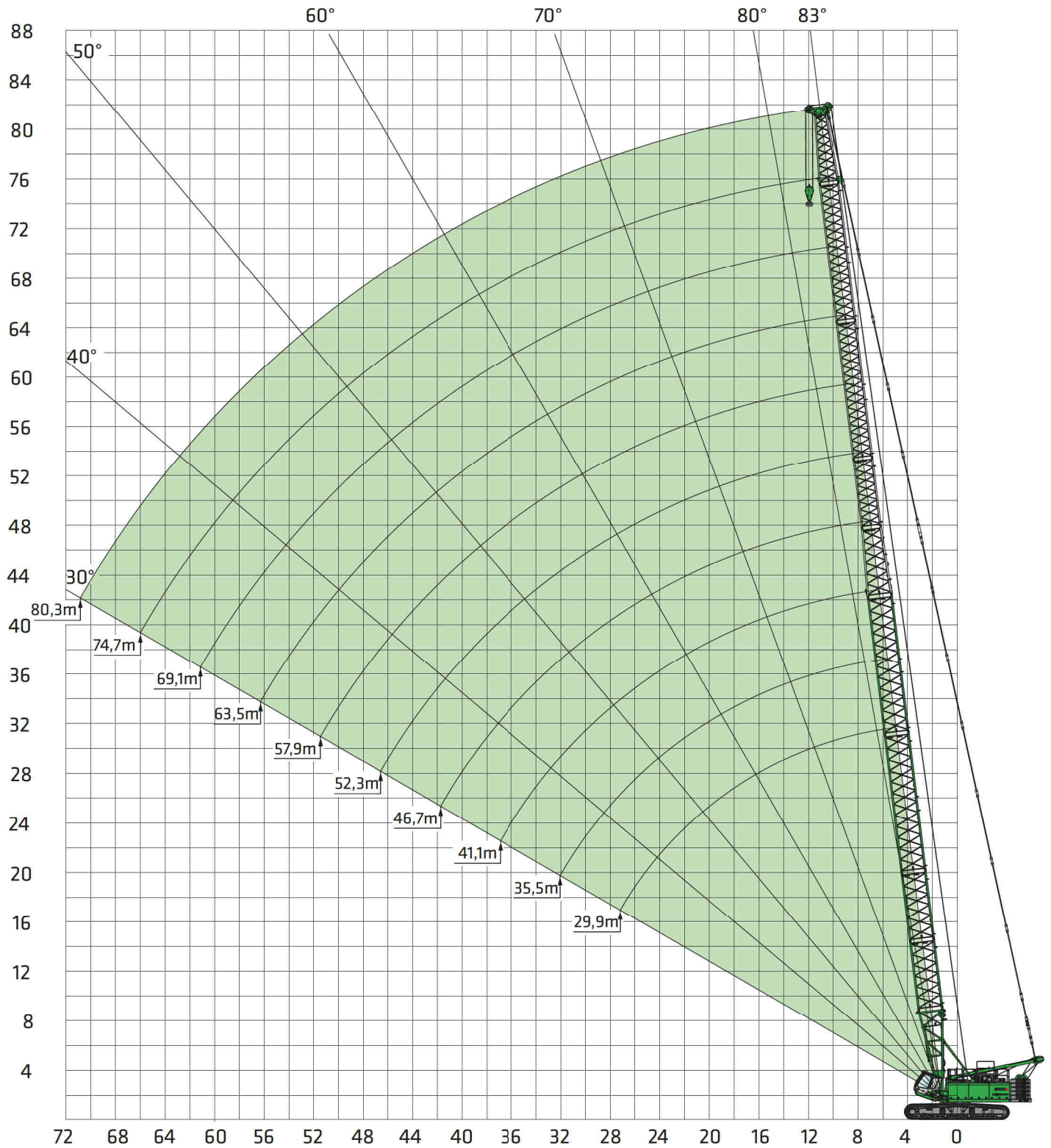
Comments:

- The specified load ratings apply to a level and stable stance of the machine.
- Load ratings are in tons and apply to 360 degrees.
- The load ratings take into account the standards DIN 15019/2 and ISO 4305 (tiling angle 4°)
- Deduct the weight of the load handling devices (hook, suspension gear) from the load ratings.
- The load ratings apply to the maximum undercarriage track width.
- Load ratings must be limited or reduced when conditions are unfavorable, such as soft or uneven ground, slopes, wind, lateral loads, swinging loads, jerking, or sudden stopping of load, operator inexperience, driving with load.
- Permissible rope pull per strand in crane mode for winch diameter 26 mm – 12,000 kg
- Load ratings apply to the boom assembly in accordance with the operating manual.
- Load ratings apply to optimum boom assembly and a pulley head with plastic pulleys.
- The specified load ratings are only for orientation. See the operating manual for the respectively valid load ratings.
- Values indicated with * or ** apply only with special equipment or a special boom attachment.

5500E Crane equipment



Main boom SHLH



Boom assembly see page 23

8 Subject to change. See page 7 for notes on load lift charts.

5500E Load ratings



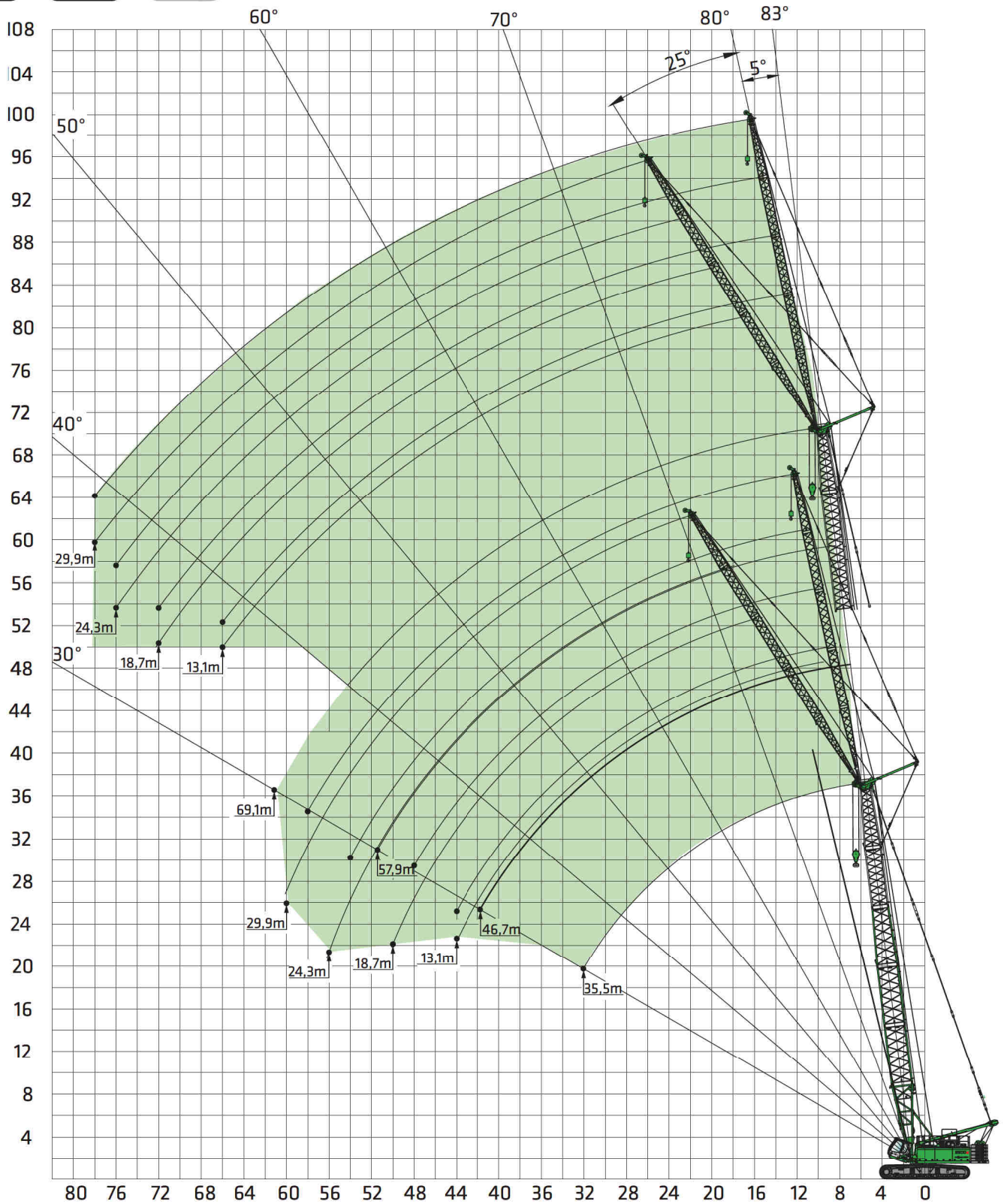
Main boom SHLH

60 t 26 t Outreach radius [m]	Boom length [m]									
	29.9	35.5	41.1	46.7	52.3	57.9	63.5	69.1	74.7	80.3
4.7										
5.0	70.0 / 5.8									
6.0	70.0	70.0 / 6.5								
7.0	70.0	70.0	70.0 / 7.2	59.1 / 7.8						
8.0	70.0	70.0	67.2	58.7	48.5 / 8.5					
9.0	70.0	70.0	63.9	56.3	47.7	39.1 / 9.2	31.5 / 9.9			
10.0	70.0	70.0	60.6	53.8	46.0	38.2	31.4	25.4 / 10.6		
11.0	68.9	68.7	57.2	51.4	44.3	37.1	30.6	25.2	20.5 / 11.3	
12.0	60.9	60.7	53.9	49.0	42.7	36.0	29.9	24.6	20.2	16.5
13.0	54.5	54.3	50.6	46.6	41.0	34.8	29.1	24.1	19.8	16.2
14.0	49.2	49.0	47.3	44.1	39.3	33.7	28.3	23.6	19.4	15.9
15.0	44.8	44.6	44.0	41.7	37.6	32.6	27.6	23.0	19.1	15.6
16.0	41.1	40.9	40.6	39.3	36.0	31.5	26.8	22.5	18.7	15.3
17.0	37.9	37.7	37.5	36.8	34.3	30.3	26.0	21.9	18.3	15.1
18.0	35.2	34.9	34.7	34.4	32.6	29.2	25.3	21.4	17.9	14.8
19.0	32.8	32.5	32.3	32.0	30.9	28.1	24.5	20.9	17.5	14.5
20.0	30.6	30.4	30.1	29.8	29.3	27.0	23.7	20.3	17.1	14.2
22.0	27.0	26.8	26.5	26.2	25.9	24.7	22.2	19.3	16.3	13.6
24.0	24.1	23.9	23.6	23.3	23.0	22.5	20.7	18.2	15.6	13.0
26.0	21.7	21.4	21.2	20.9	20.5	20.2	19.1	17.1	14.8	12.5
28.0	20.0 / 27.6	19.4	19.1	18.8	18.5	18.2	17.6	16.0	14.0	11.9
30.0		17.7	17.4	17.1	16.8	16.4	16.1	15.0	13.2	11.3
32.0		16.2	15.9	15.6	15.3	14.9	14.6	13.9	12.5	10.8
34.0		15.8 / 32.5	14.6	14.3	13.9	13.6	13.2	12.8	11.7	10.2
36.0			13.4	13.1	12.8	12.4	12.1	11.7	10.9	9.6
38.0			12.7 / 37.3	12.1	11.8	11.4	11.1	10.7	10.1	9.0
40.0				11.2	10.8	10.5	10.1	9.8	9.4	8.5
42.0				10.4	10.0	9.7	9.3	9.0	8.6	7.9
44.0				10.3 / 42.2	9.3	8.9	8.6	8.2	7.9	7.3
46.0					8.6	8.3	7.9	7.5	7.2	6.8
48.0					8.3 / 47.0	7.6	7.3	6.9	6.6	6.2
50.0						7.1	6.7	6.4	6.0	5.6
52.0						6.6 / 51.9	6.2	5.8	5.5	5.1
54.0							5.7	5.4	5.0	4.6
56.0							5.3	4.9	4.5	4.2
58.0							5.1 / 56.7	4.5	4.1	3.8
60.0								4.1	3.7	3.4
62.0								3.8 / 61.6	3.4	3.0
64.0									3.0	2.7
66.0									2.7	2.4
68.0									2.6 / 66.4	2.1
70.0										1.8
72.0										1.6 / 71.3
70.0	Table no. 5500R-75/2987/60.0/02.01 SHLH									
Number of strands	6	6	6	5	5	4	3	3	2	2

5500E Crane equipment



Main boom SHLH with fly jib FS



Boom assembly see page 24

10 Subject to change. See page 7 for notes on load lift charts.

5500E Load ratings



Main boom SHLH with fly jib FS

60 t 26 t	Main boom length [m]															
	35.5				46.7				57.9				69.1			
5°	Fly boom length [m]															
Outreach [m]	13.1	18.7	24.3	29.9	13.1	18.7	24.3	29.9	13.1	18.7	24.3	29.9	13.1	18.7	24.3	29.9
	9.0	22.7														
10.0	22.3	19.9														
11.0	21.8	19.3	14.4		22.4											
12.0	21.4	18.7	14.0		21.9	17.6			20.6							
13.0	21.0	18.2	13.7	9.4	21.4	17.2	13.0		20.2	15.2			16.5			
14.0	20.6	17.6	13.3	9.2	21.0	16.7	12.7	8.9	19.8	14.9	11.5		16.2	12.2		
15.0	20.2	17.1	13.0	9.0	20.5	16.3	12.4	8.7	19.4	14.6	11.2	8.2	16.0	12.0		
16.0	19.7	16.6	12.7	8.8	20.1	16.0	12.2	8.6	19.1	14.4	11.0	8.1	15.7	11.8	9.2	
17.0	19.3	16.1	12.3	8.6	19.6	15.6	11.9	8.4	18.7	14.1	10.8	7.9	15.4	11.6	9.1	7.3
18.0	18.9	15.6	12.0	8.4	19.2	15.2	11.6	8.3	18.3	13.8	10.7	7.8	15.2	11.5	8.9	7.2
19.0	18.5	15.1	11.7	8.3	18.8	14.8	11.4	8.1	18.0	13.6	10.5	7.7	14.9	11.3	8.8	7.1
20.0	18.2	14.6	11.4	8.1	18.4	14.5	11.1	8.0	17.6	13.3	10.3	7.6	14.7	11.1	8.7	7.0
22.0	17.4	13.7	10.8	7.8	17.6	13.8	10.6	7.7	16.9	12.8	9.9	7.4	14.1	10.8	8.4	6.8
24.0	16.6	12.9	10.2	7.4	16.8	13.1	10.2	7.4	16.3	12.3	9.5	7.1	13.6	10.5	8.2	6.7
26.0	15.9	12.1	9.7	7.1	16.1	12.4	9.7	7.2	15.6	11.8	9.2	6.9	13.1	10.1	7.9	6.5
28.0	15.2	11.3	9.2	6.8	15.4	11.8	9.3	6.9	15.0	11.4	8.8	6.7	12.6	9.8	7.7	6.3
30.0	14.5	10.6	8.7	6.5	14.7	11.2	8.9	6.7	14.5	10.9	8.5	6.5	12.0	9.5	7.4	6.2
32.0	13.8	10.0	8.2	6.3	14.0	10.7	8.5	6.4	13.9	10.5	8.2	6.3	11.5	9.1	7.2	6.0
34.0	13.2	9.4	7.8	6.0	13.4	10.1	8.1	6.2	13.4	10.1	7.9	6.1	11.0	8.8	7.0	5.8
36.0	12.5	8.9	7.4	5.8	12.8	9.6	7.7	6.0	12.8	9.7	7.6	5.9	10.5	8.5	6.7	5.7
38.0	11.9	8.4	7.0	5.5	12.3	9.1	7.4	5.7	11.7	9.3	7.3	5.8	10.0	8.2	6.5	5.5
40.0	11.3	8.0	6.7	5.3	11.5	8.7	7.0	5.5	10.8	9.0	7.0	5.6	9.5	7.8	6.3	5.4
42.0	10.7	7.6	6.3	5.1	10.6	8.3	6.7	5.3	9.9	8.6	6.8	5.4	9.0	7.5	6.1	5.2
44.0	10.2	7.2	6.0	4.9	9.8	7.9	6.4	5.1	9.1	8.3	6.5	5.2	8.3	7.2	5.8	5.1
46.0		7.0	5.8	4.7	9.0	7.5	6.2	5.0	8.3	8.0	6.3	5.1	7.6	6.9	5.6	5.0
48.0		6.7	5.5	4.5	8.4	7.2	5.9	4.8	7.7	7.7	6.1	4.9	6.9	6.6	5.4	4.8
50.0			5.3	4.4	7.8	6.9	5.7	4.6	7.0	7.4	5.8	4.8	6.3	6.2	5.2	4.7
52.0			5.1	4.2	7.2	6.6	5.4	4.4	6.5	6.8	5.6	4.6	5.7	5.9	5.0	4.6
54.0			4.9	4.1		6.4	5.2	4.3	6.0	6.2	5.4	4.5	5.2	5.5	4.8	4.4
56.0				4.0		6.1	5.0	4.2	5.5	5.7	5.2	4.3	4.7	5.0	4.6	4.3
58.0				3.9		5.9	4.9	4.0	5.0	5.3	5.1	4.2	4.3	4.5	4.4	4.2
60.0							4.7	3.9	4.6	4.9	4.9	4.1	3.8	4.1	4.3	4.0
62.0							4.6	3.8	4.2	4.5	4.7	4.0	3.4	3.7	4.0	3.9
64.0								3.7		4.1	4.3	3.8	3.1	3.3	3.6	3.8
66.0								3.6		3.7	4.0	3.7	2.7	3.0	3.2	3.5
68.0								3.5		3.4	3.7	3.6		2.6	2.9	3.1
70.0											3.3	3.5		2.3	2.6	2.8
72.0											3.0	3.3		2.0	2.3	2.5
74.0												3.0			2.0	2.2
76.0													2.7		1.7	1.9
78.0													2.4			1.7
80.0	No. 5500R-75/2987/60.0/09.02 SHLHFS 5															
Number of strands	2	2	2	1	2	2	2	1	2	2	1	1	2	2	1	1

5500E Load ratings



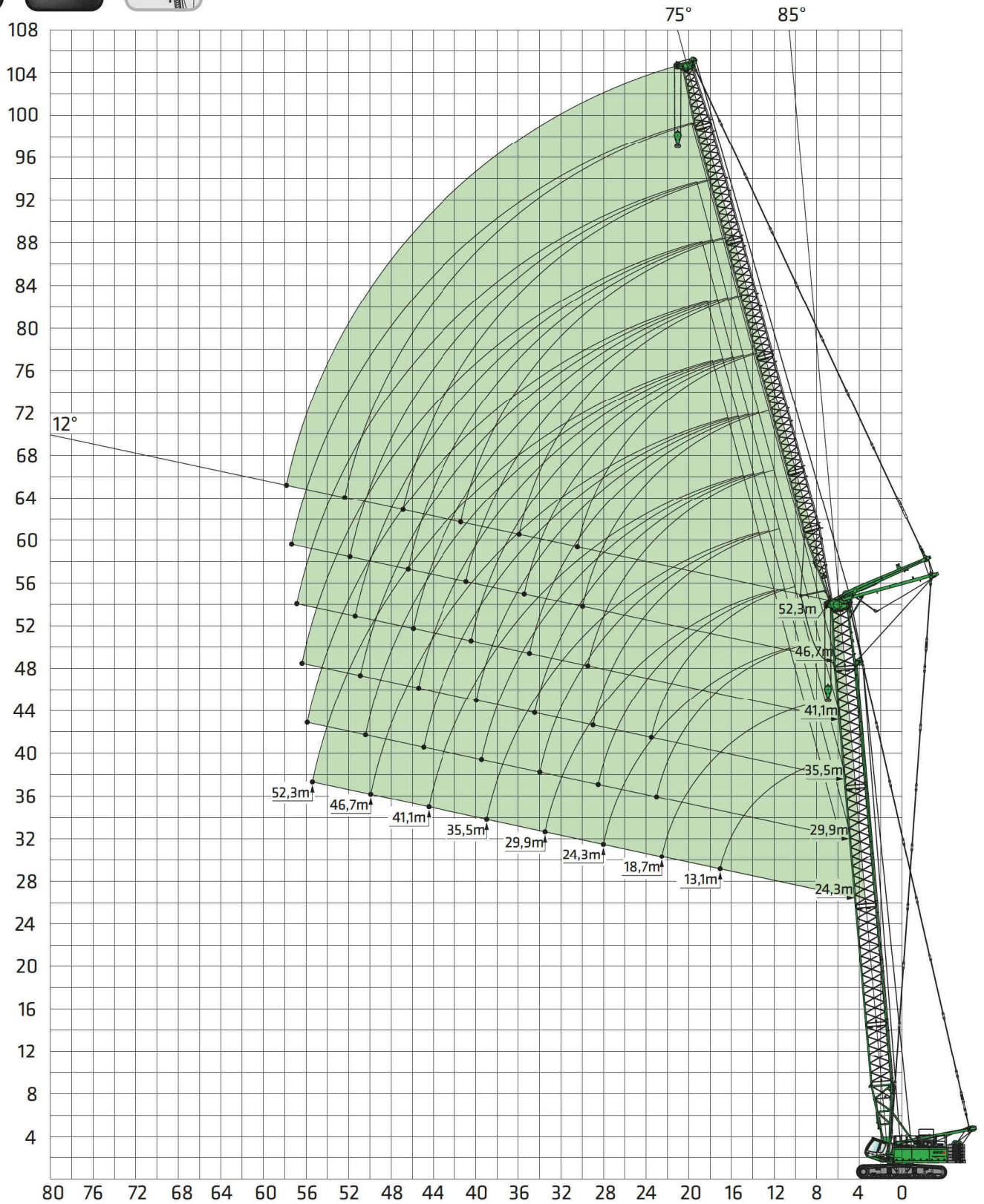
Main boom SHLH with fly jib FS

60 t 26 t		Main boom length [m]															
25°		35.5				46.7				57.9				69.1			
Outreach [m]	Fly boom length [m]																
	13.1	18.7	24.3	29.9	13.1	18.7	24.3	29.9	13.1	18.7	24.3	29.9	13.1	18.7	24.3	29.9	
9.0																	
10.0																	
11.0																	
12.0																	
13.0	18.1																
14.0	17.5																
15.0	16.9	15.9															
16.0	16.4	12.2	15.5	14.4													
17.0	15.8	11.8	15.1	14.1													
18.0	15.3	11.4	14.7	10.6	13.8	12.1											
19.0	14.8	11.1	8.6	14.3	10.4	13.5	9.8	11.9									
20.0	14.4	10.8	8.4	13.9	10.1	7.8	13.2	9.6	11.7	8.8							
22.0	13.5	10.1	7.9	6.4	13.2	9.7	7.5	12.6	9.2	7.2	11.2	8.5					
24.0	12.7	9.6	7.5	6.1	12.5	9.2	7.2	5.8	12.1	8.8	6.9	10.7	8.2	6.3			
26.0	11.9	9.0	7.1	5.9	11.9	8.8	6.8	5.6	11.6	8.5	6.6	5.4	10.3	7.9	6.1	5.0	
28.0	11.2	8.5	6.7	5.6	11.3	8.4	6.5	5.4	11.1	8.1	6.4	5.2	9.9	7.6	5.9	4.9	
30.0	10.6	8.0	6.4	5.3	10.8	8.0	6.3	5.2	10.6	7.8	6.1	5.0	9.5	7.3	5.6	4.7	
32.0	10.1	7.6	6.0	5.1	10.2	7.6	6.0	4.9	10.2	7.5	5.9	4.8	9.0	7.0	5.4	4.6	
34.0	9.6	7.2	5.7	4.9	9.8	7.3	5.7	4.8	9.8	7.2	5.6	4.6	8.6	6.8	5.2	4.4	
36.0	9.2	6.9	5.4	4.6	9.3	6.9	5.5	4.6	9.4	6.9	5.4	4.5	8.2	6.5	5.0	4.3	
38.0	8.9	6.6	5.2	4.4	9.0	6.7	5.2	4.4	9.0	6.7	5.2	4.3	7.9	6.3	4.8	4.2	
40.0	8.7	6.4	4.9	4.2	8.6	6.4	5.0	4.2	8.7	6.4	5.0	4.2	7.5	6.0	4.7	4.0	
42.0	8.5	6.1	4.7	4.1	8.3	6.1	4.8	4.1	8.4	6.2	4.8	4.0	7.1	5.8	4.5	3.9	
44.0	8.4	6.0	4.6	3.9	8.1	5.9	4.6	3.9	8.2	6.0	4.7	3.9	6.8	5.6	4.4	3.8	
46.0		5.8	4.4	3.7	7.8	5.7	4.5	3.7	7.9	5.8	4.5	3.7	6.4	5.4	4.2	3.7	
48.0		5.8	4.3	3.6	7.7	5.6	4.3	3.6	7.7	5.6	4.3	3.6	6.1	5.2	4.1	3.5	
50.0		5.7	4.2	3.5	7.5	5.4	4.2	3.5	7.4	5.4	4.2	3.5	5.8	5.0	4.0	3.4	
52.0			4.1	3.3	7.4	5.3	4.0	3.4	6.8	5.3	4.1	3.4	5.4	4.8	3.9	3.3	
54.0			4.0	3.2	6.8	5.2	3.9	3.2	6.2	5.2	4.0	3.3	5.1	4.6	3.8	3.2	
56.0			4.0	3.1		5.1	3.8	3.1	5.7	5.1	3.8	3.2	4.8	4.5	3.7	3.1	
58.0				3.1		5.1	3.7	3.0	5.2	5.0	3.7	3.1	4.6	4.3	3.6	3.1	
60.0				3.0		5.0	3.6	2.9	4.8	4.9	3.7	3.0	4.1	4.2	3.6	3.0	
62.0							3.6	2.9	4.4	4.8	3.6	2.9	3.7	4.0	3.5	2.9	
64.0								3.5	2.8	3.9	4.4	3.5	2.8	3.3	3.7	3.5	2.8
66.0								3.5	2.7		4.0	3.5	2.8	2.9	3.3	3.5	2.7
68.0									2.7		3.6	3.4	2.7		3.0	3.4	2.7
70.0									2.6		3.2	3.4	2.7		2.6	3.0	2.6
72.0												3.3	2.6		2.3	2.7	2.6
74.0												3.0	2.6			2.4	2.5
76.0													2.5			2.1	2.4
78.0													2.5				2.1
80.0													2.4				
		No. 5500R-75/2987/60.0/09.02 SHLHFS 25															
Number of strands		2	2	1	1	2	1	1	1	2	1	1	1	2	1	1	1

5500E Crane equipment



Main boom SH 85° with luffing fly boom WS



Boom assembly see page 24

Subject to change. See page 7 for notes on load lift charts.

5500E Load ratings



Main boom SH 85° with luffing fly boom WS

60 t 26 t		Main boom length [m]																					
85°		24.3					29.9					35.5											
Outreach [m]	Fly boom length [m]																						
	13.1*	18.7*	24.3	29.9	35.5	41.1	46.7	52.3	18.7*	24.3	29.9	35.5	41.1	46.7	52.3	18.7*	24.3	29.9	35.5	41.1	46.7	52.3	
8.0	70.0/8.5																						
9.0	68.0	60.0/9.9																					
10.0	64.4	59.7							55.0/10.4							45.0/10.9							
11.0	60.8	56.8	48.0						53.5							44.8							
12.0	57.2	53.9	46.7						51.1	42.3						43.3							
13.0	53.6	51.1	44.8	38.2					48.7	40.8	34.5					41.7	36.7						
14.0	50.0	48.2	42.8	37.0	30.6				46.2	39.3	33.8					40.2	35.6	30.3					
15.0	46.4	45.3	40.9	35.7	30.0				43.8	37.8	32.8	28.1				38.7	34.4	29.5	25.5				
16.0	42.7	42.4	38.9	34.4	29.2	24.8			41.4	36.2	31.7	27.4	23.0			37.1	33.3	28.7	25.0				
17.0	39.3	39.5	36.9	33.1	28.3	24.2	20.3		38.9	34.7	30.7	26.7	22.6			35.6	32.1	27.9	24.5	21.1			
18.0	38.6/17.2	36.6	35.0	31.8	27.5	23.7	20.0		36.5	33.2	29.7	26.0	22.1	18.9		34.1	31.0	27.2	23.9	20.6	17.5		
19.0		34.1	33.0	30.6	26.7	23.1	19.5	16.9	34.0	31.7	28.7	25.3	21.6	18.5	16.0	32.5	29.8	26.4	23.3	20.2	17.2		
20.0		31.9	31.1	29.3	25.8	22.5	19.1	16.6	31.8	30.2	27.7	24.5	21.1	18.1	15.7	31.0	28.7	25.6	22.7	19.8	16.9	14.9	
21.0		29.9	29.1	28.0	25.0	21.9	18.7	16.2	29.8	28.7	26.6	23.8	20.6	17.8	15.4	29.4	27.5	24.8	22.1	19.3	16.6	14.6	
22.0		28.1	27.4	26.7	24.2	21.3	18.3	15.9	28.0	27.2	25.6	23.1	20.1	17.4	15.2	27.9	26.3	24.0	21.5	18.9	16.3	14.4	
23.0		26.9/22.7	25.8	25.4	23.4	20.8	17.9	15.6	26.4	25.7	24.6	22.4	19.6	17.0	14.9	26.3	25.2	23.2	20.9	18.5	15.9	14.1	
24.0			24.4	24.2	22.5	20.2	17.5	15.3	26.1/23.2	24.3	23.6	21.7	19.1	16.7	14.6	25.3/23.7	24.0	22.4	20.4	18.0	15.6	13.8	
25.0			23.1	22.9	21.7	19.6	17.1	15.0		23.0	22.6	21.0	18.6	16.3	14.3		22.9	21.6	19.8	17.6	15.3	13.6	
26.0			21.9	21.7	20.9	19.0	16.7	14.7		21.8	21.5	20.2	18.1	15.9	14.0		21.7	20.8	19.2	17.2	15.0	13.3	
27.0			20.8	20.6	20.0	18.4	16.3	14.3		20.8	20.5	19.5	17.6	15.6	13.7		20.6	20.0	18.6	16.7	14.6	13.0	
28.0			19.8	19.6	19.2	17.9	15.9	14.0		19.7	19.5	18.8	17.1	15.2	13.4		19.6	19.2	18.0	16.3	14.3	12.8	
29.0				18.7	18.4	17.3	15.4	13.7			18.6	18.1	16.6	14.8	13.1		18.7	18.4	17.4	15.9	14.0	12.5	
30.0				17.8	17.6	16.7	15.0	13.4			17.8	17.4	16.1	14.4	12.8			17.7	16.9	15.4	13.7	12.3	
31.0				17.0	16.8	16.1	14.6	13.1			17.0	16.7	15.6	14.1	12.6			16.9	16.3	15.0	13.4	12.0	
32.0				16.3	16.0	15.5	14.2	12.8			16.2	16.0	15.1	13.7	12.3			16.1	15.7	14.6	13.0	11.7	
33.0				15.6	15.4	15.0	13.8	12.5			15.5	15.3	14.6	13.3	12.0			15.4	15.1	14.1	12.7	11.5	
34.0					14.7	14.4	13.4	12.1			14.9	14.6	14.1	13.0	11.7			14.8	14.5	13.7	12.4	11.2	
35.0					14.1	13.8	13.0	11.8				14.0	13.6	12.6	11.4				13.9	13.3	12.1	10.9	
36.0					13.5	13.2	12.6	11.5				13.5	13.1	12.2	11.1				13.4	12.8	11.7	10.7	
37.0					13.0	12.7	12.2	11.2				12.9	12.6	11.9	10.8				12.8	12.4	11.4	10.4	
38.0					12.5	12.2	11.7	10.9				12.4	12.1	11.5	10.5				12.3	12.0	11.1	10.2	
39.0					12.0	11.7	11.3	10.6				11.9	11.6	11.1	10.3				11.8	11.5	10.8	9.9	
40.0						11.3	10.9	10.2					11.2	10.8	10.0				11.4	11.1	10.5	9.6	
41.0						10.8	10.5	9.9					10.8	10.4	9.7					10.7	10.1	9.4	
42.0						10.4	10.1	9.6					10.3	10.0	9.4					10.3	9.8	9.1	
43.0						10.0	9.7	9.3					10.0	9.7	9.1					9.9	9.5	8.8	
44.0						9.6	9.4	9.0					9.6	9.3	8.8					9.5	9.2	8.6	
45.0							9.0	8.7					9.2	8.9	8.5					9.1	8.8	8.3	
46.0							8.7	8.3						8.6	8.2						8.5	8.1	
47.0							8.3	8.0						8.3	7.9						8.2	7.8	
48.0							8.0	7.7						8.0	7.7						7.9	7.5	
49.0							7.7	7.4						7.7	7.4						7.6	7.3	
50.0							7.4	7.1						7.4	7.1						7.3	7.0	
51.0								6.9							6.8						7.0	6.7	
52.0								6.6							6.6							6.5	
53.0								6.4							6.3							6.2	
54.0								6.1							6.1							6.0	
55.0								5.9							5.8							5.8	
56.0															5.6							5.5	
Number of strands		6	5	5	4	3	3	2	2	5	4	3	3	3	2	2	4	4	3	3	2	2	2

Table no.: 5500R-75/2987/60.0/10.06 SHWS 85

5500E Load ratings



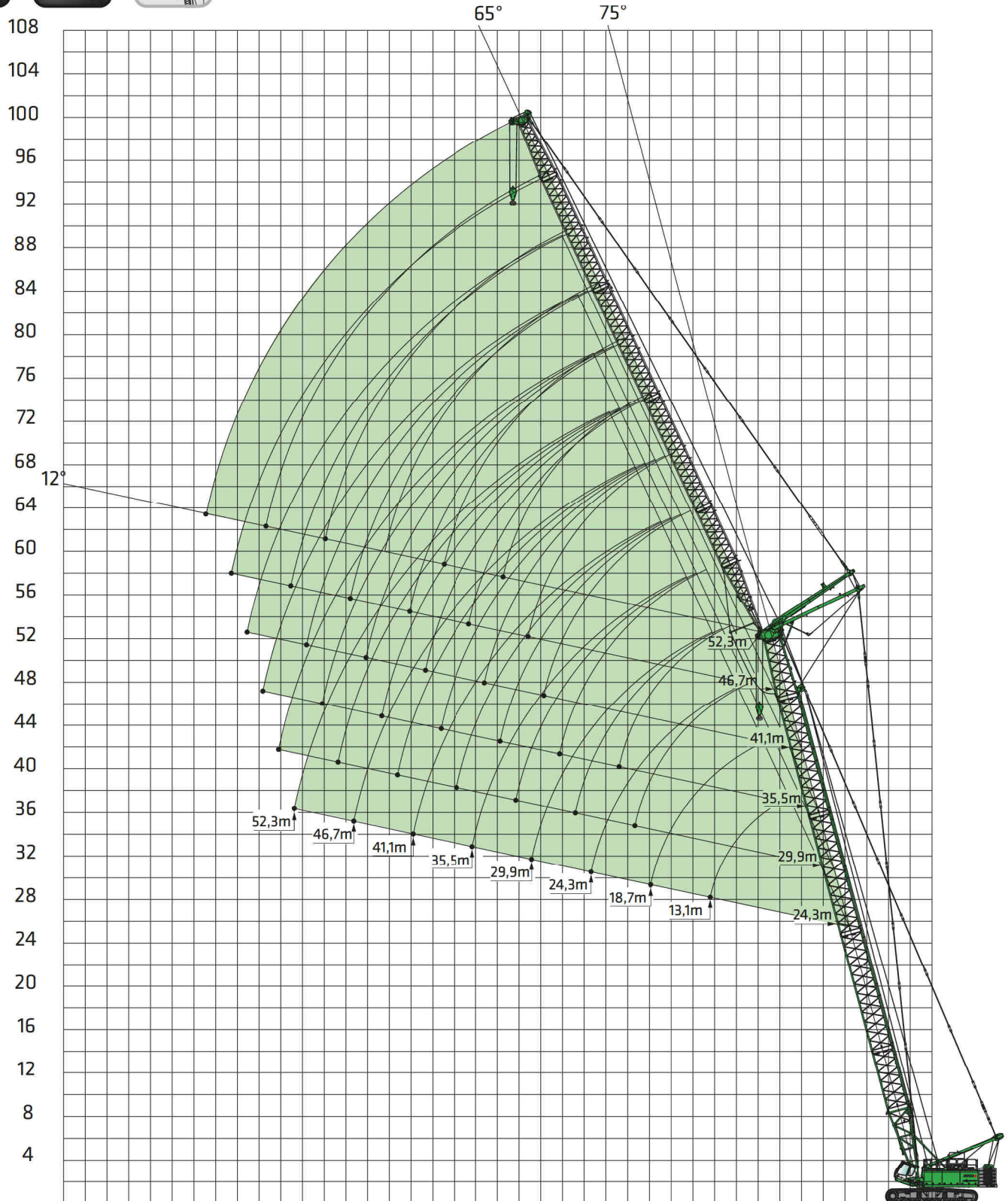
Main boom SH 85° with luffing fly boom WS

60 t 26 t		Main boom length [m]																	
85°		41.1						46.7						52.3					
Outreach [m]	Fly boom length [m]																		
	24.3	29.9	35.5	41.1	46.7	52.3	24.3	29.9	35.5	41.1	46.7	52.3	24.3	29.9	35.5	41.1	46.7	52.3	
12.0																			
13.0	32.8																		
14.0	31.9	27.5					28.5						24.9						
15.0	31.1	27.0					27.8	24.1					24.4	21.2					
16.0	30.2	26.4	23.1				27.2	23.6	20.6				23.9	20.9					
17.0	29.3	25.7	22.6	19.5			26.5	23.1	20.2				23.5	20.5	17.9				
18.0	28.4	25.1	22.1	19.2			25.8	22.5	19.8	17.4			23.0	20.1	17.6	15.5			
19.0	27.5	24.4	21.6	18.8	15.9		25.1	22.0	19.4	17.1	14.5		22.5	19.8	17.3	15.2			
20.0	26.6	23.8	21.1	18.4	15.6	14.0	24.4	21.5	19.0	16.8	14.3		22.0	19.4	17.0	15.0	12.5		
21.0	25.7	23.1	20.6	18.1	15.3	13.8	23.7	21.0	18.6	16.4	14.0	12.3	21.6	19.0	16.7	14.7	12.3	10.5	
22.0	24.8	22.5	20.1	17.7	15.1	13.5	23.1	20.5	18.2	16.1	13.8	12.1	21.1	18.6	16.4	14.5	12.1	10.4	
23.0	23.9	21.8	19.6	17.3	14.8	13.3	22.4	20.0	17.8	15.8	13.6	11.9	20.6	18.2	16.1	14.2	12.0	10.2	
24.0	23.0	21.2	19.1	16.9	14.5	13.1	21.7	19.5	17.4	15.5	13.3	11.7	20.1	17.8	15.8	14.0	11.8	10.0	
25.0	22.2	20.5	18.6	16.6	14.2	12.8	21.0	19.0	17.0	15.2	13.1	11.5	19.6	17.5	15.5	13.7	11.6	9.9	
26.0	21.3	19.9	18.1	16.2	13.9	12.6	20.3	18.5	16.7	14.9	12.8	11.3	19.2	17.1	15.2	13.5	11.4	9.7	
27.0	20.4	19.2	17.6	15.8	13.7	12.3	19.6	18.0	16.3	14.6	12.6	11.1	18.7	16.7	14.8	13.2	11.2	9.6	
28.0	19.5	18.6	17.1	15.4	13.4	12.1	18.9	17.5	15.9	14.3	12.4	10.9	18.2	16.3	14.5	13.0	11.0	9.4	
29.0	18.6	17.9	16.7	15.1	13.1	11.9	18.3	17.0	15.5	13.9	12.1	10.7	17.7	15.9	14.2	12.7	10.8	9.3	
30.0		17.3	16.2	14.7	12.8	11.6	17.6	16.4	15.1	13.6	11.9	10.5	17.3	15.5	13.9	12.5	10.6	9.1	
31.0		16.6	15.7	14.3	12.5	11.4		15.9	14.7	13.3	11.6	10.3		15.2	13.6	12.2	10.4	9.0	
32.0		16.0	15.2	13.9	12.3	11.2		15.4	14.3	13.0	11.4	10.1		14.8	13.3	12.0	10.3	8.8	
33.0		15.3	14.7	13.5	12.0	10.9		14.9	13.9	12.7	11.2	9.9		14.4	13.0	11.7	10.1	8.7	
34.0		14.7	14.2	13.2	11.7	10.7		14.4	13.5	12.4	10.9	9.7		14.0	12.7	11.5	9.9	8.5	
35.0		14.1	13.7	12.8	11.4	10.4		13.9	13.1	12.1	10.7	9.5		13.6	12.4	11.2	9.7	8.4	
36.0			13.2	12.4	11.1	10.2			12.7	11.7	10.4	9.3		13.2	12.1	11.0	9.5	8.2	
37.0			12.7	12.0	10.9	10.0			12.3	11.4	10.2	9.1			11.8	10.7	9.3	8.1	
38.0			12.2	11.7	10.6	9.7			11.9	11.1	10.0	8.9			11.5	10.5	9.1	7.9	
39.0			11.7	11.3	10.3	9.5			11.5	10.8	9.7	8.7			11.2	10.2	8.9	7.8	
40.0			11.3	10.9	10.0	9.2			11.1	10.5	9.5	8.5			10.9	10.0	8.7	7.6	
41.0				10.5	9.7	9.0				10.2	9.2	8.3			10.6	9.7	8.6	7.5	
42.0				10.2	9.5	8.8				9.9	9.0	8.1				9.5	8.4	7.3	
43.0				9.8	9.2	8.5				9.6	8.8	7.9				9.2	8.2	7.1	
44.0				9.4	8.9	8.3				9.2	8.5	7.7				8.9	8.0	7.0	
45.0				9.1	8.6	8.1				8.9	8.3	7.5				8.7	7.8	6.8	
46.0				8.7	8.4	7.8				8.6	8.0	7.3				8.4	7.6	6.7	
47.0					8.1	7.6					7.8	7.1				8.2	7.4	6.5	
48.0					7.8	7.3					7.6	6.9					7.2	6.4	
49.0					7.5	7.1					7.3	6.7					7.0	6.2	
50.0					7.2	6.9					7.1	6.5					6.9	6.1	
51.0					7.0	6.6					6.8	6.3					6.7	5.9	
52.0						6.4					6.6	6.1					6.5	5.8	
53.0						6.2						5.9						5.6	
54.0						5.9						5.7						5.5	
55.0						5.7						5.5						5.3	
56.0						5.5						5.3						5.2	
57.0						5.2						5.1						5.0	
58.0																		4.9	
59.0																			
60.0																			
Number of strands	4	3	3	2	2	2	3	3	2	2	2	2	3	2	2	2	2	2	

5500E Crane equipment



Main boom SH 75° with luffing fly boom WS



Boom assembly see page 24

16 Subject to change. See page 7 for notes on load lift charts.

5500E Load ratings



Main boom SH 75° with luffing fly boom WS

60 t 26 t		Main boom length [m]																						
75°		24.3							29.9							35.5								
Outreach [m]	Fly boom length [m]																							
	13.1*	18.7*	24.3	29.9	35.5	41.1	46.7	52.3	18.7*	24.3	29.9	35.5	41.1	46.7	52.3	18.7*	24.3	29.9	35.5	41.1	46.7	52.3		
14.0	45.0/14.8																							
15.0	44.1																							
16.0	40.5																							
17.0	37.4	36.0/17.1																						
18.0	34.7	34.2							32.3/18.6															
19.0	32.3	32.1							31.3															
20.0	30.2	30.0	29.1						29.3									28.5						
21.0	28.3	28.2	27.2						27.5	26.5								26.8						
22.0	27.4/21.4	26.5	25.6	25.2					25.9	24.9								25.2						
23.0		25.0	24.1	23.8					24.5	23.5								23.8	22.8					
24.0		23.7	22.8	22.4					23.1	22.2	21.8							22.5	21.6					
25.0		22.4	21.6	21.2	20.8				21.9	21.0	20.6							21.3	20.4	20.0				
26.0		21.3	20.5	20.1	19.7				20.8	20.0	19.6	19.1						20.2	19.4	18.9				
27.0		20.3/26.9	19.5	19.1	18.7	18.3			19.8	19.0	18.6	18.2						19.2	18.4	18.0				
28.0			18.5	18.2	17.8	17.4			18.8	18.0	17.7	17.3	16.8					18.3	17.5	17.1	16.7			
29.0			17.7	17.3	17.0	16.6	16.2		18.4/28.3	17.2	16.8	16.4	16.0					17.5	16.7	16.3	15.8			
30.0			16.9	16.5	16.2	15.8	15.4			16.4	16.1	15.7	15.2					16.8/29.8	15.9	15.5	15.1	14.7		
31.0			16.1	15.8	15.4	15.0	14.6			15.7	15.3	14.9	14.5	14.1					15.2	14.8	14.4	14.0		
32.0			15.4	15.1	14.7	14.4	14.0	13.6		15.0	14.7	14.3	13.9	13.4					14.5	14.2	13.8	13.3	12.9	
33.0				14.5	14.1	13.7	13.3	12.9		14.3	14.0	13.6	13.2	12.8	12.4				13.9	13.6	13.1	12.7	12.3	
34.0				13.8	13.5	13.1	12.7	12.3			13.4	13.1	12.7	12.3	11.8				13.3	13.0	12.6	12.2	11.7	
35.0				13.3	12.9	12.6	12.2	11.8			12.9	12.5	12.1	11.7	11.3				12.8	12.4	12.0	11.6	11.2	10.8
36.0				12.7	12.4	12.0	11.7	11.3			12.4	12.0	11.6	11.2	10.8					11.9	11.5	11.1	10.7	10.3
37.0				12.2	11.9	11.5	11.2	10.8			11.9	11.5	11.1	10.7	10.3					11.5	11.1	10.7	10.2	9.8
38.0					11.4	11.1	10.7	10.3			11.4	11.1	10.7	10.3	9.9					11.0	10.6	10.2	9.8	9.4
39.0					11.0	10.6	10.3	9.9			10.9	10.6	10.2	9.8	9.4					10.6	10.2	9.8	9.4	9.0
40.0					10.6	10.2	9.8	9.5				10.2	9.8	9.4	9.0					10.1	9.8	9.4	9.0	8.6
41.0					10.2	9.8	9.4	9.1				9.8	9.4	9.0	8.6						9.4	9.0	8.6	8.2
42.0					9.8	9.4	9.1	8.7				9.4	9.1	8.7	8.3						9.1	8.7	8.3	7.9
43.0					9.4	9.1	8.7	8.3				9.1	8.7	8.3	7.9						8.7	8.3	7.9	7.5
44.0						8.7	8.4	8.0				8.7	8.4	8.0	7.6						8.4	8.0	7.6	7.2
45.0						8.4	8.0	7.7					8.1	7.7	7.3						8.1	7.7	7.3	6.9
46.0						8.1	7.7	7.4					7.8	7.4	7.0						7.7	7.4	7.0	6.6
47.0						7.8	7.4	7.1					7.5	7.1	6.7						7.1	6.7	6.3	6.3
48.0						7.5	7.1	6.8					7.2	6.8	6.4						6.8	6.5	6.1	6.1
49.0							6.9	6.5						6.9	6.6	6.2						6.6	6.2	5.8
50.0							6.6	6.3						6.6	6.3	5.9						6.3	6.0	5.6
51.0							6.4	6.0							6.1	5.7					6.1	5.7	5.3	5.3
52.0							6.1	5.8							5.8	5.5							5.5	5.1
53.0							5.9	5.5							5.6	5.2							5.3	4.9
54.0							5.6	5.3							5.4	5.0							5.1	4.7
55.0								5.1							5.2	4.8							4.9	4.5
56.0								4.9							4.6								4.7	4.3
57.0								4.7							4.4								4.5	4.1
58.0								4.5							4.2									3.9
59.0								4.3							4.0									3.7
60.0															3.9									3.6
61.0															3.7									3.4
62.0																								3.2

Table no.: 5500R-75/2987/60.0/10.06 SHWS 75

Number of strands

6	5	5	4	3	3	2	2	5	4	4	3	3	2	2	4	4	3	3	2	2	2	2
---	---	---	---	---	---	---	---	---	---	---	---	---	---	---	---	---	---	---	---	---	---	---

5500E Load ratings



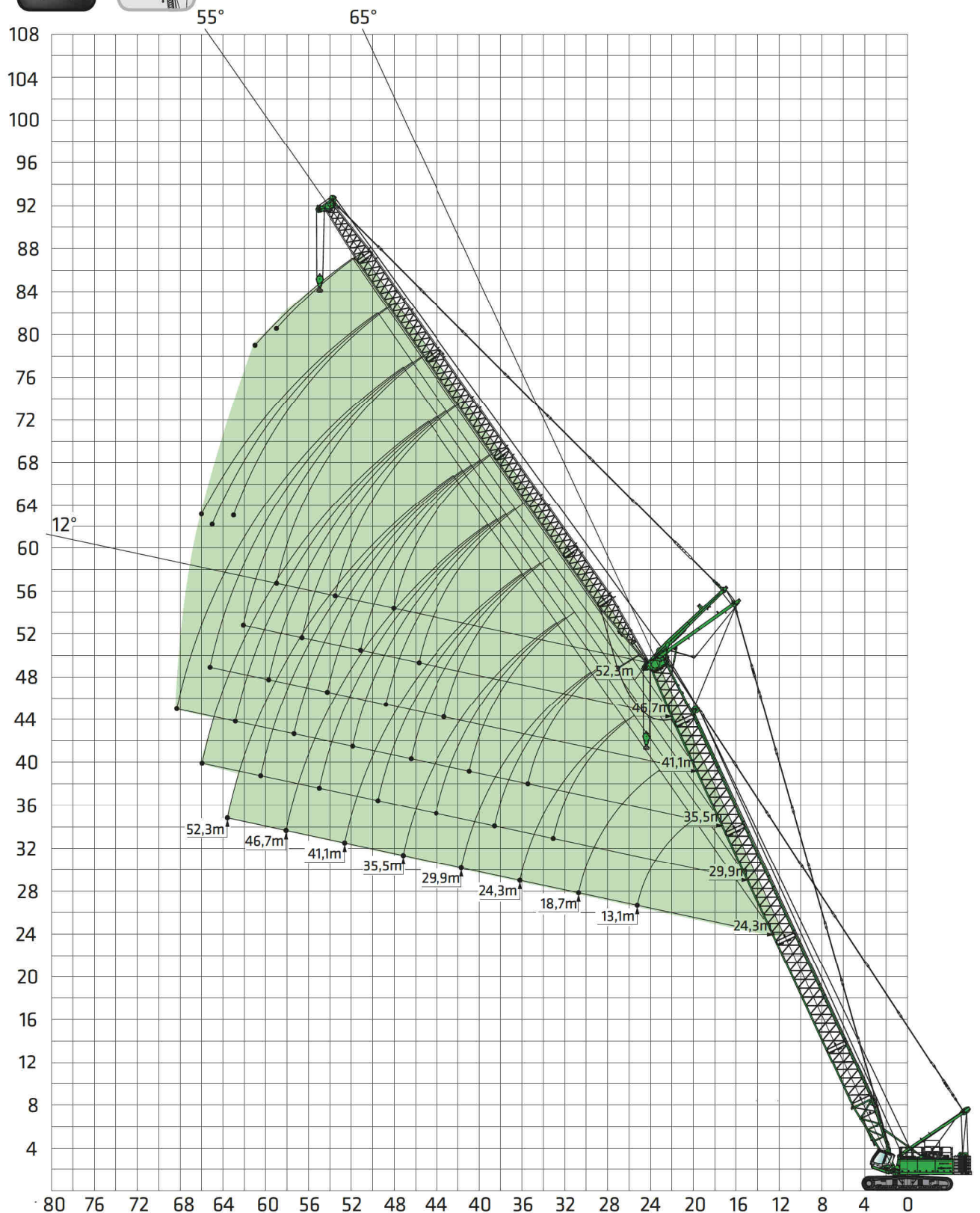
Main boom SH 75° with luffing fly boom WS

60 t 26 t		Main boom length [m]																	
75°		41.1						46.7						52.3					
Outreach [m]	Fly boom length [m]																		
	24.3	29.9	35.5	41.1	46.7	52.3	24.3	29.9	35.5	41.1	46.7	52.3	24.3	29.9	35.5	41.1	46.7	52.3	
20.0																			
21.0																			
22.0																			
23.0																			
24.0	20.8																		
25.0	19.7																		
26.0	18.7						17.9												
27.0	17.7	17.3					17.0						16.3						
28.0	16.9	16.4					16.2	15.7					15.5						
29.0	16.1	15.7	15.2				15.4	15.0					14.7	14.2					
30.0	15.3	14.9	14.5				14.7	14.3	13.8				14.0	13.6					
31.0	14.7	14.2	13.8	13.3			14.1	13.6	13.1				13.4	12.9					
32.0	14.0	13.6	13.2	12.7			13.4	13.0	12.5				12.8	12.3	11.9				
33.0	13.4	13.0	12.6	12.1			12.9	12.4	12.0	11.5			12.3	11.8	11.3				
34.0	12.8	12.5	12.0	11.6	11.1		12.3	11.9	11.5	11.0			11.7	11.3	10.8	10.3			
35.0	12.3	11.9	11.5	11.1	10.6		11.8	11.4	11.0	10.5	10.0		11.2	10.8	10.3	9.9			
36.0	11.8	11.5	11.0	10.6	10.2	9.7	11.3	10.9	10.5	10.0	9.6		10.8	10.3	9.9	9.4			
37.0		11.0	10.6	10.2	9.7	9.3	10.9	10.5	10.0	9.6	9.1		10.3	9.9	9.5	9.0	8.5		
38.0		10.5	10.1	9.7	9.3	8.8	10.4	10.1	9.6	9.2	8.7	8.3	9.9	9.5	9.1	8.6	8.1		
39.0		10.1	9.7	9.3	8.9	8.4		9.7	9.2	8.8	8.3	7.9	9.5	9.1	8.7	8.2	7.8	7.3	
40.0		9.7	9.4	8.9	8.5	8.1		9.3	8.9	8.4	8.0	7.5		8.8	8.3	7.9	7.4	6.9	
41.0		9.4	9.0	8.6	8.1	7.7		8.9	8.5	8.1	7.6	7.2		8.4	8.0	7.5	7.1	6.6	
42.0		9.0	8.6	8.2	7.8	7.4		8.6	8.2	7.8	7.3	6.9		8.1	7.7	7.2	6.8	6.3	
43.0			8.3	7.9	7.5	7.1		8.2	7.9	7.4	7.0	6.6		7.8	7.4	6.9	6.5	6.0	
44.0			8.0	7.6	7.2	6.7			7.6	7.1	6.7	6.3		7.5	7.1	6.6	6.2	5.7	
45.0			7.7	7.3	6.9	6.5			7.3	6.9	6.4	6.0		7.2	6.8	6.4	5.9	5.5	
46.0			7.4	7.0	6.6	6.2			7.0	6.6	6.1	5.7			6.5	6.1	5.7	5.2	
47.0			7.1	6.7	6.3	5.9			6.7	6.3	5.9	5.5			6.3	5.9	5.4	5.0	
48.0				6.5	6.1	5.7			6.4	6.1	5.6	5.2			6.0	5.6	5.2	4.7	
49.0				6.2	5.8	5.4			6.5	5.8	5.4	5.0			5.8	5.4	5.0	4.5	
50.0				6.0	5.6	5.2				5.6	5.2	4.8			5.5	5.2	4.7	4.3	
51.0				5.7	5.4	5.0				5.4	5.0	4.5				4.9	4.5	4.1	
52.0				5.5	5.1	4.7				5.1	4.8	4.3				4.7	4.3	3.9	
53.0				5.3	4.9	4.5				4.9	4.5	4.1				4.5	4.1	3.7	
54.0					4.7	4.3				4.7	4.4	3.9				4.3	3.9	3.5	
55.0					4.5	4.1					4.2	3.8				4.2	3.8	3.3	
56.0					4.3	3.9					4.0	3.6				4.0	3.6	3.2	
57.0					4.1	3.8					3.8	3.4					3.4	3.0	
58.0					4.0	3.6					3.6	3.2					3.3	2.9	
59.0						3.4					3.5	3.1					3.1	2.7	
60.0						3.3					3.3	2.9					2.9	2.5	
61.0						3.1						2.8					2.8	2.4	
62.0						2.9						2.6						2.3	
63.0						2.8						2.5						2.1	
64.0						2.6						2.3						2.0	
65.0												2.2						1.9	
66.0																		1.7	
67.0																		1.6	
68.0																			
Number of strands	4	3	3	2	2	2	3	3	2	2	2	2	3	2	2	2	2	2	

5500E Crane equipment



Main boom SH 65° with luffing fly boom WS



Boom assembly see page 24

Subject to change. See page 7 for notes on load lift charts.

5500E Load ratings



Main boom SH 65° with luffing fly boom WS

60 t 26 t		Main boom length [m]																					
65°		24.3					29.9					35.5											
Outreach [m]	Fly boom length [m]																						
	13.1*	18.7*	24.3	29.9	35.5	41.1	46.7	52.3	18.7*	24.3	29.9	35.5	41.1	46.7	52.3	18.7*	24.3	29.9	35.5	41.1	46.7	52.3	
20.0	27.4/20.6																						
21.0	26.8																						
22.0	25.2																						
23.0	23.8	2.4/23.8																					
24.0	22.5	22.2																					
25.0	21.2	2.1																					
26.0	20.7/25.4	20.0																					
27.0		19.0	18.4						18.8/26.2														
28.0		18.1	17.2						18.1								15.9/28.6						
29.0		17.2	16.4						17.2								15.5						
30.0		16.5	15.7						16.5								14.8						
31.0		15.7/30.9	15.0	14.6					15.7	14.9							14.2						
32.0			14.3	13.9					15.0	14.2							13.6	12.7					
33.0			13.7	13.3					14.4	13.6							13.0	12.2					
34.0			13.1	12.8	12.3				13.7	13.0	12.5						12.5	11.7					
35.0			12.6	12.2	11.8				13.5/33.2	12.4	12.0						11.9	11.2	10.7				
36.0			12.1	11.7	11.3					11.9	11.5						11.3/35.6	10.7	10.3				
37.0				11.3	10.9	10.4				11.4	11.0	10.6						10.3	9.8				
38.0				10.8	10.4	10.0				11.0	10.6	10.1						9.9	9.4				
39.0				10.4	10.0	9.6				10.5	10.2	9.7						9.5	9.1	8.6			
40.0				10.0	9.6	9.2	8.8				9.7	9.3						9.1	8.7	8.2			
41.0				9.6	9.2	8.8	8.4				9.4	8.9	8.5					8.7	8.4	7.9			
42.0					8.9	8.5	8.1				9.0	8.6	8.2						8.0	7.6	7.1		
43.0					8.5	8.1	7.7				8.7	8.3	7.8						7.7	7.3	6.8		
44.0					8.2	7.8	7.4	7.0			8.3	7.9	7.5	7.1					7.4	7.0	6.5		
45.0					7.9	7.5	7.1	6.7			8.0	7.6	7.2	6.8					7.1	6.7	6.3	5.8	
46.0					7.6	7.2	6.8	6.4				7.3	6.9	6.5					6.8	6.5	6.0	5.5	
47.0					7.3	6.9	6.5	6.1				7.1	6.6	6.2	5.8					6.2	5.8	5.3	
48.0						6.7	6.3	5.9				6.8	6.4	5.9	5.5					6.0	5.5	5.1	4.6
49.0						6.4	6.0	5.6				6.5	6.1	5.7	5.3					5.7	5.3	4.8	4.4
50.0						6.2	5.8	5.4				6.3	5.9	5.5	5.0					5.5	5.1	4.6	4.2
51.0						5.9	5.6	5.2					5.6	5.2	4.8					5.3	4.9	4.4	4.0
52.0						5.7	5.3	4.9					5.4	5.0	4.6					5.0	4.7	4.2	3.8
53.0							5.1	4.7					5.2	4.8	4.4						4.5	4.0	3.6
54.0							4.9	4.5					5.0	4.6	4.2						4.3	3.9	3.4
55.0							4.7	4.3					4.8	4.4	4.0						4.1	3.7	3.2
56.0							4.5	4.1					4.6	4.2	3.8						3.9	3.5	3.1
57.0							4.3	3.9						4.0	3.6						3.7	3.3	2.9
58.0							4.1	3.8							3.9	3.4						3.2	2.8
59.0								3.6							3.7	3.3						3.0	2.6
60.0								3.4							3.5	3.1						2.9	2.5
61								3.3							3.3	3.0						2.7	2.3
62								3.1								2.8						2.6	2.2
63								3.0								2.7						2.4	2.0
64																2.5							1.9
65																2.4							1.8
66																2.2							1.7
67																2.1							1.5
68																							1.4
Table no.: 5500R-75/2987/60.0/10.06 SHWS 65																							
Number of strands	6	5	5	4	3	3	2	2	5	4	4	3	3	2	2	4	4	3	3	2	2	2	

20 Subject to change. See page 7 for notes on load lift charts.

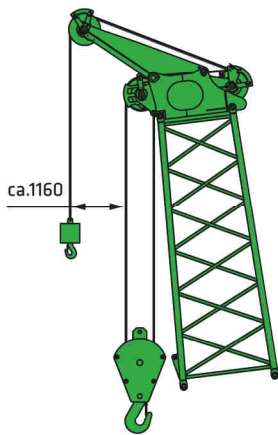
5500E Load ratings



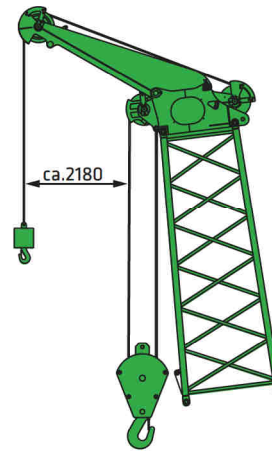
Main boom SH 65° with luffing fly boom WS

60 t 26 t		Main boom length [m]																	
65°		41.1						46.7						52.3					
Outreach [m]	Fly boom length [m]																		
	24.3	29.9	35.5	41.1	46.7	52.3	24.3	29.9	35.5	41.1	46.7	52.3	24.3	29.9	35.5	41.1	46.7	52.3	
20.0																			
21.0																			
22.0																			
23.0																			
24.0																			
25.0																			
26.0																			
27.0																			
28.0																			
29.0																			
30.0																			
31.0																			
32.0																			
33.0																			
34.0																			
35.0	10.3																		
36.0	9.9																		
37.0	9.5						8.6												
38.0	9.1	8.6					8.3												
39.0	8.7	8.3					7.9						7.0						
40.0	8.4	7.9					7.6	7.1					6.7						
41.0	8.1	7.6	7.1				7.3	6.8					6.5						
42.0	7.7	7.3	6.8				7.0	6.5					6.2						
43.0	7.4	7.0	6.5				6.7	6.3	5.8				5.9	5.4					
44.0		6.7	6.3	5.8			6.5	6.0	5.5				5.7	5.2					
45.0		6.5	6.0	5.5			6.2	5.8	5.3				5.5	5.0					
46.0		6.2	5.8	5.3				5.5	5.0				5.2	4.8	4.2				
47.0		6.0	5.5	5.1	4.6			5.3	4.8	4.3			5.0	4.6	4.1				
48.0		5.7	5.3	4.9	4.4			5.1	4.6	4.1			4.8	4.4	3.9				
49.0		5.5	5.1	4.6	4.2			4.9	4.4	3.9				4.2	3.7	3.2			
50.0			4.9	4.4	4.0			4.7	4.2	3.8	3.3			4.0	3.5	3.0			
51.0			4.7	4.2	3.8	3.3		4.5	4.0	3.6	3.1			3.8	3.3	2.8			
52.0			4.5	4.1	3.6	3.1			3.9	3.4	2.9			3.6	3.2	2.7	2.2		
53.0			4.3	3.9	3.4	2.9			3.7	3.2	2.7	2.3		3.5	3.0	2.5	2.0		
54.0			4.1	3.7	3.2	2.8			3.5	3.1	2.6	2.1			2.9	2.4	1.9		
55.0				3.5	3.1	2.6			3.4	2.9	2.4	2.0			2.9	2.4	1.9		
56.0				3.4	2.9	2.5			3.2	2.8	2.3	1.8			2.7	2.2	1.7	1.2	
57.0				3.2	2.8	2.3				2.6	2.2	1.7			2.6	2.1	1.6		
58.0				3.0	2.6	2.2				2.5	2.0	1.5			2.4	2.0	1.5		
59.0				2.9	2.5	2.0				2.3	1.9	1.4			2.3	1.8	1.4		
60.0					2.3	1.9				2.2	1.8	1.3			2.2	1.7	1.2		
61.0					2.2	1.8				2.1	1.6	1.2				1.6			
62.0					2.1	1.6				1.9	1.5					1.5			
63.0					1.9	1.5					1.4					1.4			
64.0					1.8	1.4					1.3					1.3			
65.0					1.7	1.3					1.2								
66.0						1.2													
67.0																			
68.0																			
Number of strands	4	3	3	2	2	2	3	3	2	2	2	2	3	2	2	2	2	2	

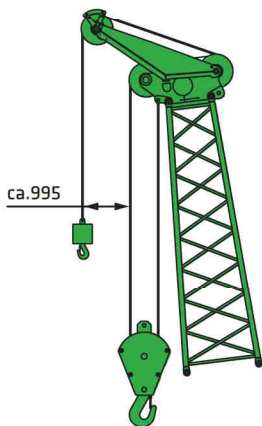
5500E Additional equipment



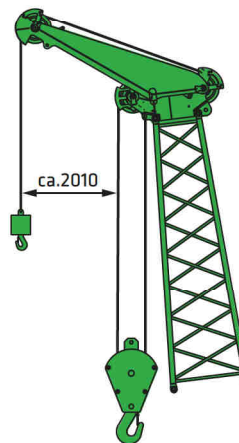
**Main boom SH with auxiliary jib
S12.1 (12 t)**



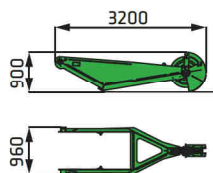
**Main boom SH with auxiliary jib
S24.1 (24 t)**



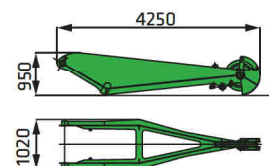
**Main boom SHLH with auxiliary jib
S12.1 (12 t)**



**Main boom SHLH with auxiliary jib
S24.1 (24 t)**



**Auxiliary jib S12.1 (370 kg)
Load rating 12.0 t**



**Auxiliary jib S24.1 (510 kg)
Load rating 24.0 t**

5500E Additional equipment

Main boom SH

Boom length [m]		18.7	24.3	29.9	35.5	41.1	46.7	52.3	57.9	63.5	69.1	74.7
Lower boom section SH type 2027	7.0 m	1	1	1	1	1	1	1	1	1	1	1
Boom section SH type 2027	5.6 m	1	2	1	2	1	2	1	2	1	2	1
Boom section SH type 2027	11.2 m			1	1	2	2	3	3	4	4	5
Boom section conical SH type 2027	5.6 m	1	1	1	1	1	1	1	1	1	1	1
Pulley head T150	0.5 m	1	1	1	1	1	1	1	1	1	1	1
Auxiliary jib S12.1	12.0 t	x	x	x	x	x	x	x	x	x	x	x
Auxiliary jib S24.1	24.0 t	x	x	x	x	x	x	x	x	x	x	x

Main boom SHLH

Boom length [m]		29.9	35.5	41.1	46.7	52.3	57.9	63.5	69.1	74.7	80.3
Lower boom section SH type 2027	7.0 m	1	1	1	1	1	1	1	1	1	1
Boom section SH type 2027	5.6 m	1	2	2	1	1	2	2	1	1	2
Boom section SH type 2027	11.2 m				1	1	1	1	2	2	2
Boom section, conical SH type 2027	5.6 m	1	1	1	1	1	1	1	1	1	1
Boom section LH type 1608	5.6 m	1	1	2	2	1	1	2	2	1	1
Boom section LH type 1608	11.2 m					1	1	1	1	2	2
Boom section conical LH type 1608	5.6 m	1	1	1	1	1	1	1	1	1	1
Pulley head T70	0.5 m	1	1	1	1	1	1	1	1	1	1
Auxiliary jib S12.1	12.0 t	x	x	x	x	x	x	x	x	x	x
Auxiliary jib S24.1	24.0 t	x	x	x	x	x	x	x	x	x	x



For 160 kN winches with 26 mm rope diameter

Capacity	Weight	Rope strands and maximum load rating [kg]													
		14	13	12	11	10	9	8	7	6	5	4	3	2	1
15 t	450 kg														12,000
40 t 1-pulley	900 kg												36,000	24,000	12,000
80 t 3-pulley	1,350 kg								80,000	72,000	60,000	48,000	36,000	24,000	12,000
125 t 5-pulley	1,500 kg					125,000	108,000	96,000	84,000	72,000	60,000	48,000	36,000	24,000	12,000
160 t 7-pulley	1,700 kg	160,000	156,000	144,000	132,000	120,000	108,000	96,000	84,000	72,000	60,000	48,000	36,000	24,000	12,000

5500E Boom configuration

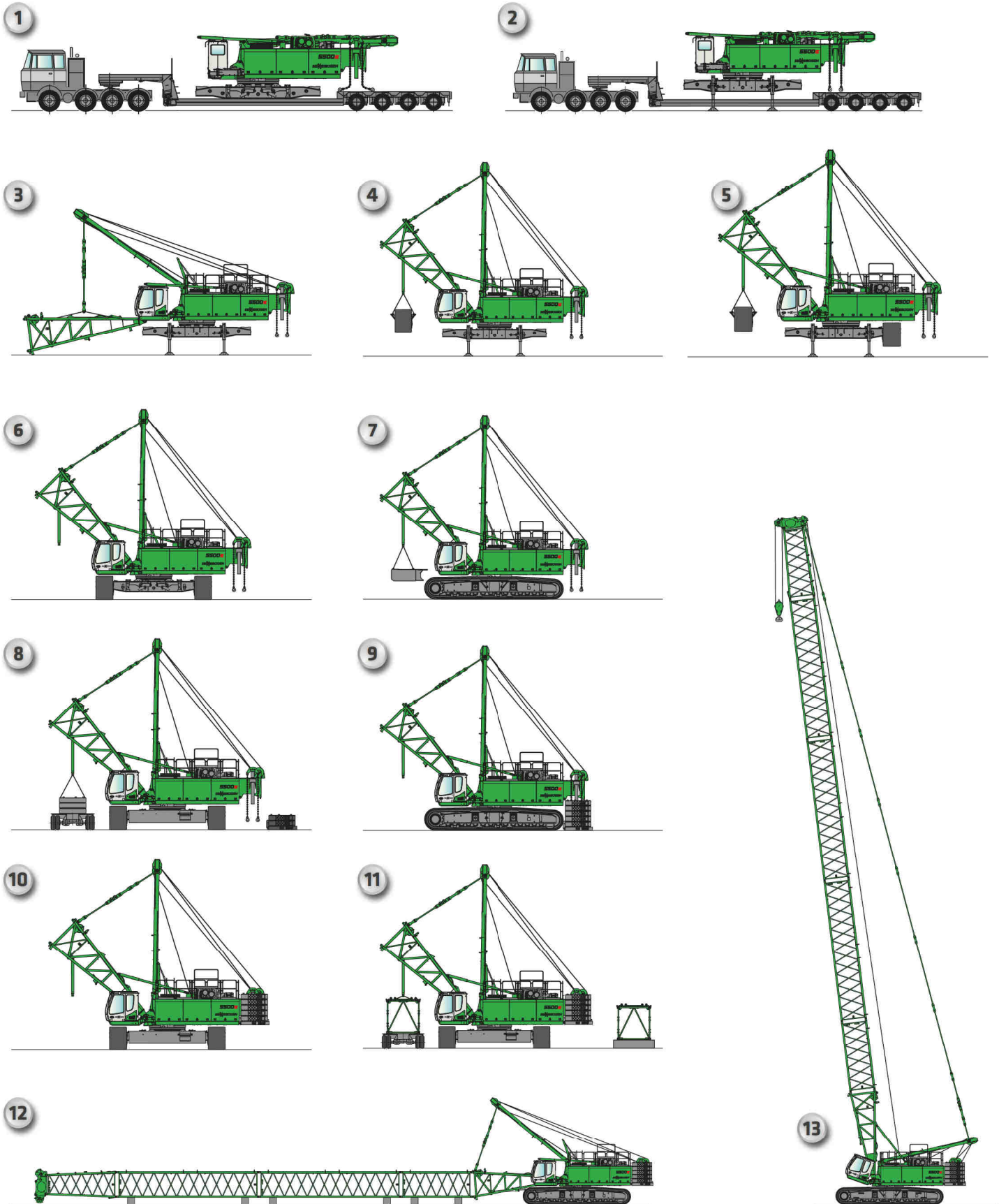
Luffing jib SHWS (main boom SH with luffing fly boom WS)

Boom length [m]		Main boom						Fly boom							
		24.3	29.9	35.5	41.1	46.7	52.3	13.1	18.7	24.3	29.9	35.5	41.1	46.7	52.3
Lower boom section SH type 2027	7.0 m	1	1	1	1	1	1								
Boom section SH type 2027	5.6 m	2	1	2	1	2	1								
Boom section SH type 2027	11.2 m		1	1	2	2	3								
Boom section, conical SH type 2027	5.6 m	1	1	1	1	1	1								
Pulley head T150	0.5 m	1	1	1	1	1	1								
Fly boom lower section LH type 1608	7.0 m							1	1	1	1	1	1	1	1
Boom section LH type 1608	5.6 m								1	2	1	2	1	2	1
Boom section LH type 1608	11.2 m										1	1	2	2	3
Boom section conical LH type 1608	5.6 m							1	1	1	1	1	1	1	1
Pulley head T70	0.5 m							1	1	1	1	1	1	1	1
Combination possibilities															
Fly boom length	13.1 m	x													
	18.7 m	x	x	x											
	24.3 m	x	x	x	x	x	x								
	29.9 m	x	x	x	x	x	x								
	35.5 m	x	x	x	x	x	x								
	41.1 m	x	x	x	x	x	x								
	46.7 m	x	x	x	x	x	x								
	52.3 m	x	x	x	x	x	x								

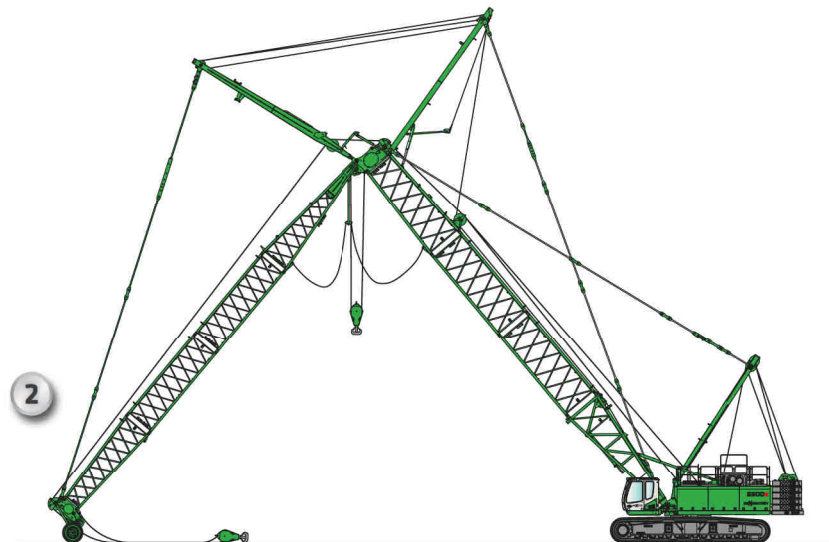
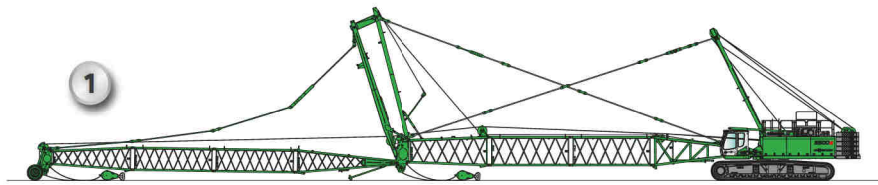
SHLHFS (main boom SHLH with fly jib FS)

Boom length [m]		Main boom								Fixed fly			
		29.9	35.5	41.1	46.7	52.3	57.9	63.5	69.1	74.7	13.1	18.7	24.3
Lower boom section SH type 2027	7.0 m	1	1	1	1	1	1	1	1	1			
Boom section SH type 2027	5.6 m	1	2	2	1	1	2	2	1	1			
Boom section SH type 2027	11.2 m				1	1	1	1	2	2			
Boom section, conical SH type 2027	5.6 m	1	1	1	1	1	1	1	1	1			
Boom section LH type 1608	5.6 m	1	1	2	2	1	1	2	2	1			
Boom section LH type 1608	11.2 m					1	1	1	1	2			
Boom section conical LH type 1608	5.6 m	1	1	1	1	1	1	1	1	1			
Pulley head T70	0.5 m	1	1	1	1	1	1	1	1	1			
Fly boom lower section type 870	7.5 m										1	1	1
Boom section type 870	5.6 m											1	2
Head piece type 870	5.6 m										1	1	1
Combination possibilities													
Fly jib length	13.1 m	x	x	x	x	x	x	x	x	x	x		
	18.7 m	x	x	x	x	x	x	x	x	x	x		
	24.3 m	x	x	x	x	x	x	x	x	x	x		

5500E Self-assembly system




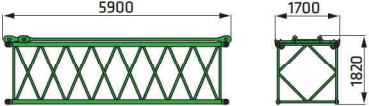
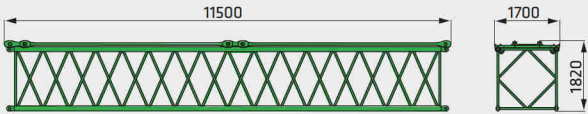
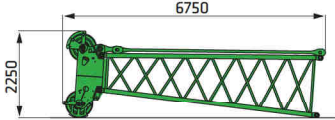
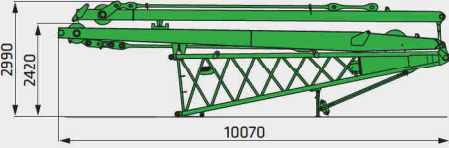
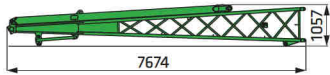
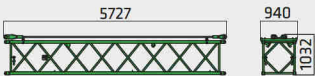
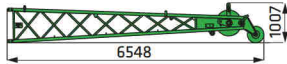
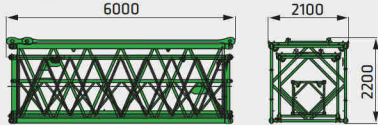
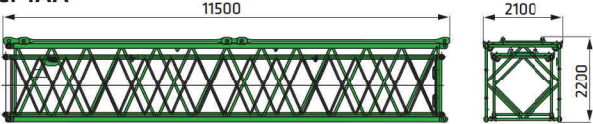
5500E Hoisting the boom SHWS



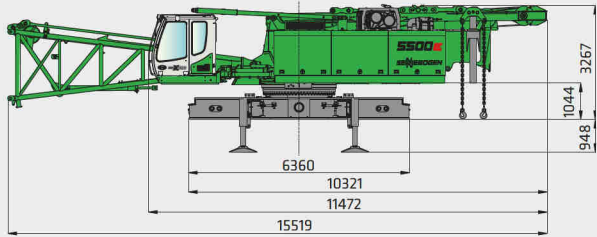
5500E Transport dimensions

	<p>5500 E basic machine with lower boom section</p> <p>Transport weight 40,000 kg</p> <p>Transport width 3,200 mm</p>
	<p>5500 E basic machine without lower boom section</p> <p>Transport weight 36,100 kg</p> <p>Transport width 3,000 mm</p>
	<p>Crawler traveling gear, 2 pieces 1,000 mm (1,200 mm) flat base plates</p> <p>Weight 2 x 17,400 kg (19,560 kg)</p>
	<p>Ballast base plate</p> <p>Weight 1 x 12,000 kg</p>
	<p>Counterweight</p> <p>Weight 1 x 1,300 kg</p>
	<p>Counterweight 10 pieces</p> <p>Weight 10 x 4,800 kg</p>
	<p>Undercarriage ballast 2 pieces</p> <p>Weight 2 x 13,000 kg</p>
	<p>Lower boom section 7 m type SH 2027 (incl. adjustment winch WS and rope)</p> <p>Weight 3,900 kg</p> <p>Width 2,100 mm</p>
	<p>Intermediate boom section 5.6 m type SH 2027 (with SH/SHWS guying)</p> <p>Weight 1,200/1,400 kg</p>
	<p>Intermediate boom section 11.2 m type SH 2027 (with SH/SHWS guying)</p> <p>Weight 2,200/2,600 kg</p>

5500E Transport dimensions

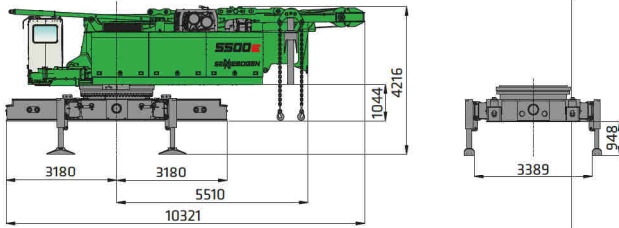
	<p>Boom head section 5.6 m type SH 2027 (with SH/SHWS guying) with pulley head T150</p> <p>Weight 1x 2,690 kg (2,940 kg) Width 2,100 mm</p>
	<p>Intermediate boom section 5.6 m type LH 1608 (with guying)</p> <p>Weight 930 kg</p>
	<p>Intermediate boom section 11.2 m type LH 1608 (with guying)</p> <p>Weight 1,730 kg</p>
	<p>Boom head section 5.6 m type LH 1608 (with guying and pulley head T70)</p> <p>Weight 1,500 kg Width 1,700 mm</p>
	<p>Lower boom section 7 m type LH 1608 (with two bracing trestles)</p> <p>Weight 5,300 kg Width 1x 1,950 mm</p>
	<p>Lower boom section 7.5 m type FS 870 (with bracing trestle)</p> <p>Weight 1,100 kg Width 1x 1,150 mm</p>
	<p>Intermediate boom section 5.6 m type FS 870 (with ropes)</p> <p>Weight 410 kg</p>
	<p>Boom headpiece 5.6 m type FS 870 (with ropes)</p> <p>Weight 620 kg Width 880 mm</p>
<p>20 ft container 1CC</p> 	<p>Intermediate boom section 5.6 m type SH 2027 incl. 5.6 m type LH 1608 with guying SH/SHWS</p> <p>Weight 2,130 / 2,330 kg (2,540 / 2,740 kg)* *incl. 5.6 m boom section type 870</p>
<p>40 ft container 1AA</p> 	<p>Intermediate boom section 11.2 m type SH 2027 incl. 11.2 m type LH 1608 with guying SH/SHWS</p> <p>Weight 3,930 / 4,330 kg</p>

5500E Transport dimensions



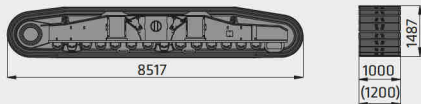
5500 E basic machine with star-lifter tele-undercarriage without lower boom

Transport weight 37,400 kg
Transport width 3,200 mm



5500 E basic machine with star-lifter tele-undercarriage and with lower boom

Transport weight 41,300 kg
Transport width 3,200 mm



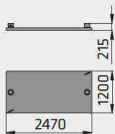
Crawler 2 pieces
1,000 mm (1,200 mm) flat shoes

Weight 2 x 17,800 kg (20,050 kg)



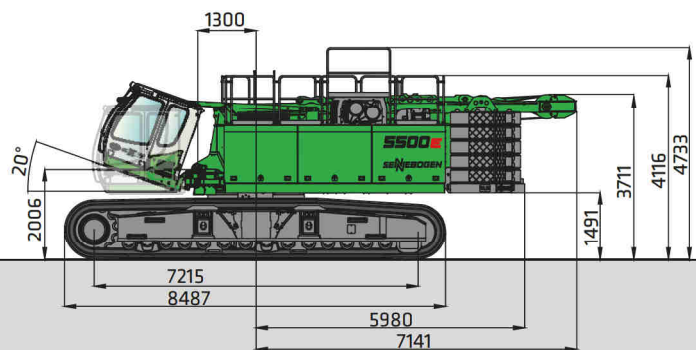
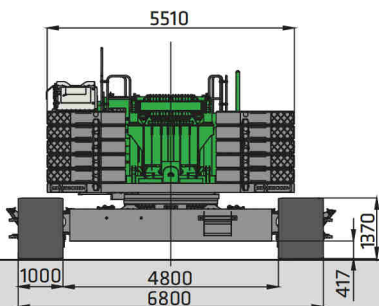
Carbody counterweight 2 pieces

Weight 2 x 13,000 kg



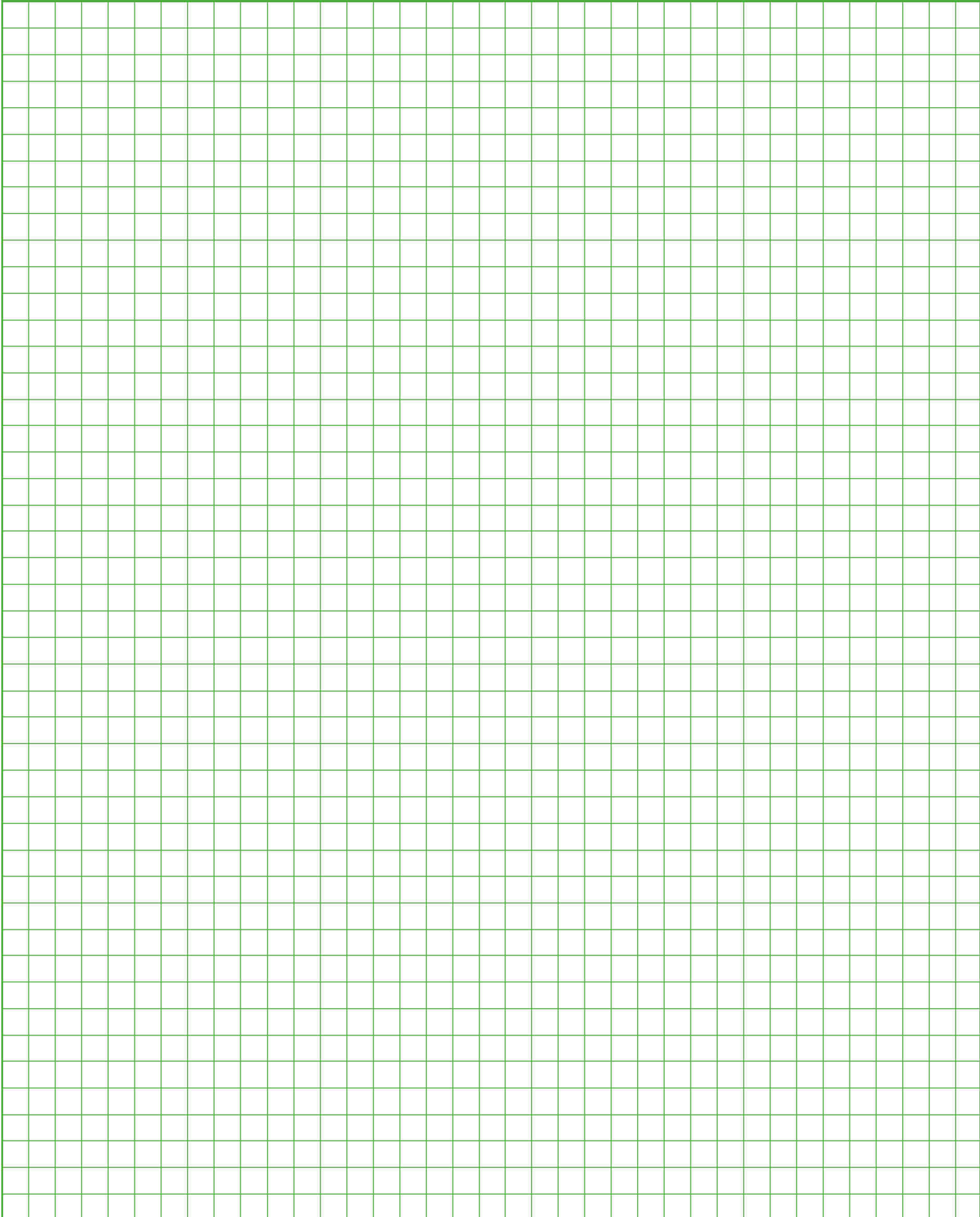
Supporting pad for star-lifter tele-undercarriage

Weight 2 x 1,900 kg

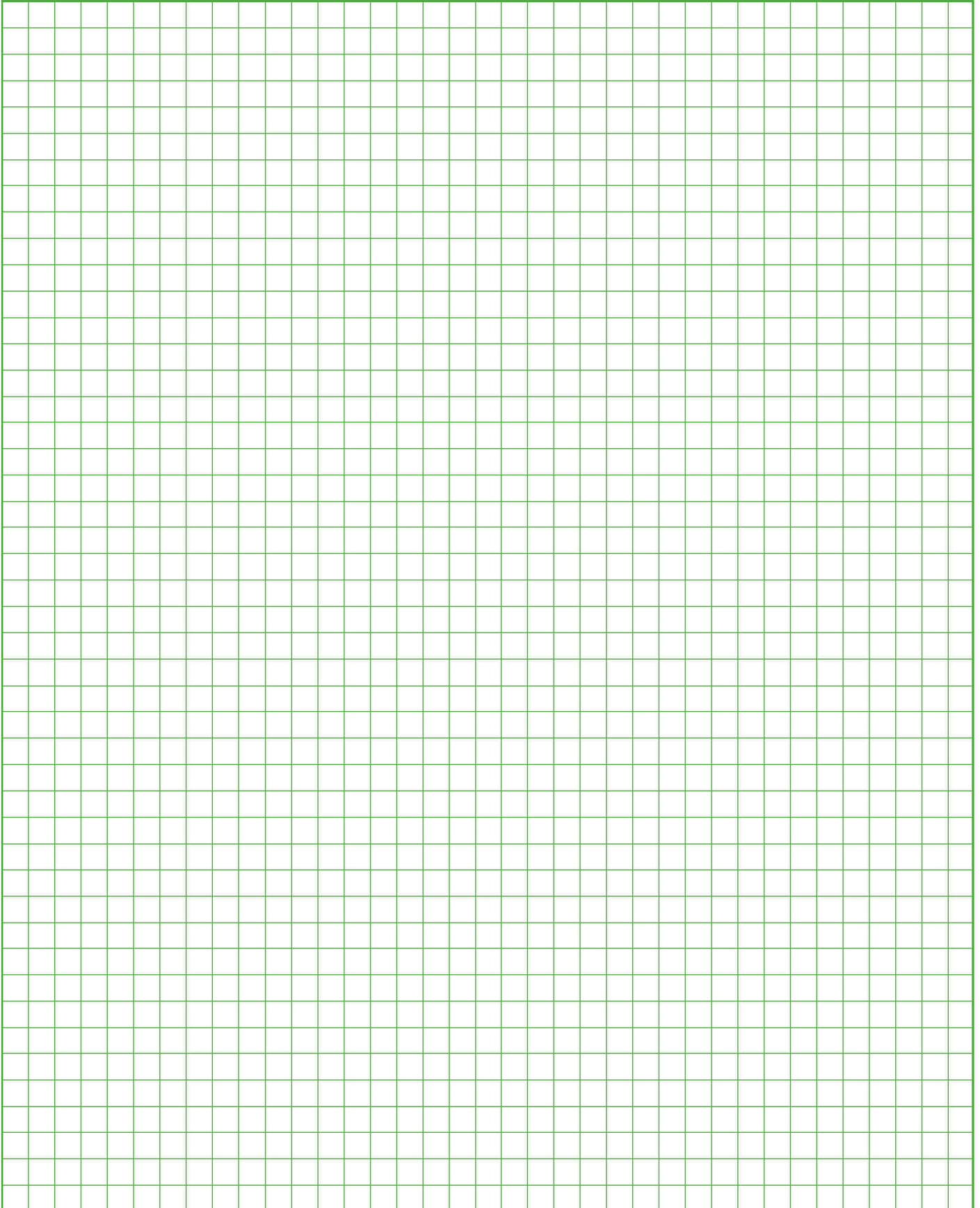


5500E basic machine without lower boom section and with circumferential railing*

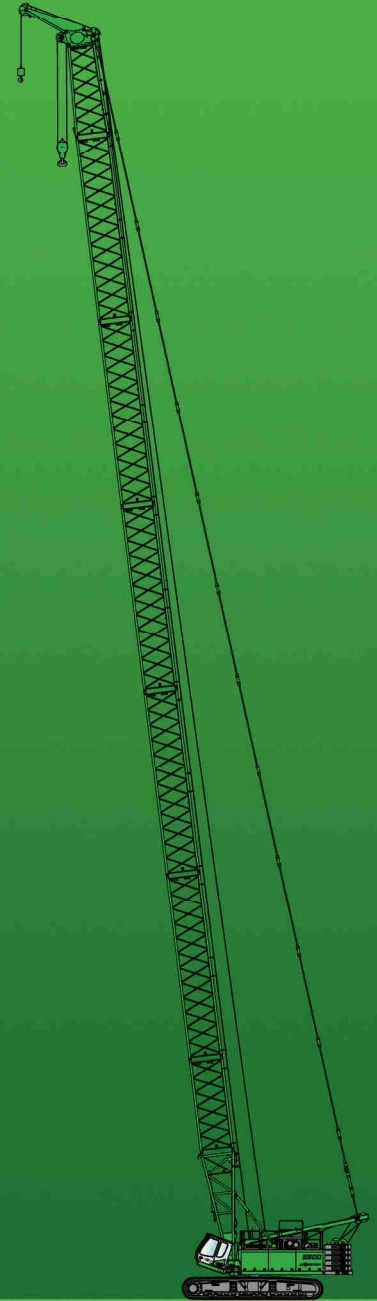
5500E Notes



5500E Notes



5500E



This catalog describes machine models, scopes of equipment of individual models, and configuration options (standard equipment and optional equipment) of the machines supplied by SENNEBOGEN Maschinenfabrik. Machine illustrations can contain optional equipment and supplemental equipment. Actual equipment may vary depending on the country to which the machines are delivered, especially in regard to standard and optional equipment.

All product designations used may be trademarks of SENNEBOGEN Maschinenfabrik GmbH or other supplying companies, and any use by third parties for their own purposes may violate the rights of the owners.

Please contact your local SENNEBOGEN sales partner for information concerning the equipment variants offered. Requested performance characteristics are only binding if they are expressly stipulated upon conclusion of the contract. Delivery options and technical features are subject to change. Errors and omissions excepted. Equipment is subject to change, and rights of advancement are reserved.

© SENNEBOGEN Maschinenfabrik GmbH, Straubing/Germany. Reproduction in whole or in part only with written consent of SENNEBOGEN Maschinenfabrik GmbH, Straubing, Germany.

SENNEBOGEN

**SENNEBOGEN
Maschinenfabrik GmbH**

Sennebogenstraße 10
94315 Straubing, Germany

Tel. +49 9421 540-144/146
Fax +49 9421 43 882
marketing@sennebogen.de

Order no. / Item No. 299042
5500-E-041615

GO FOR GREEN

 www.sennebogen.com